

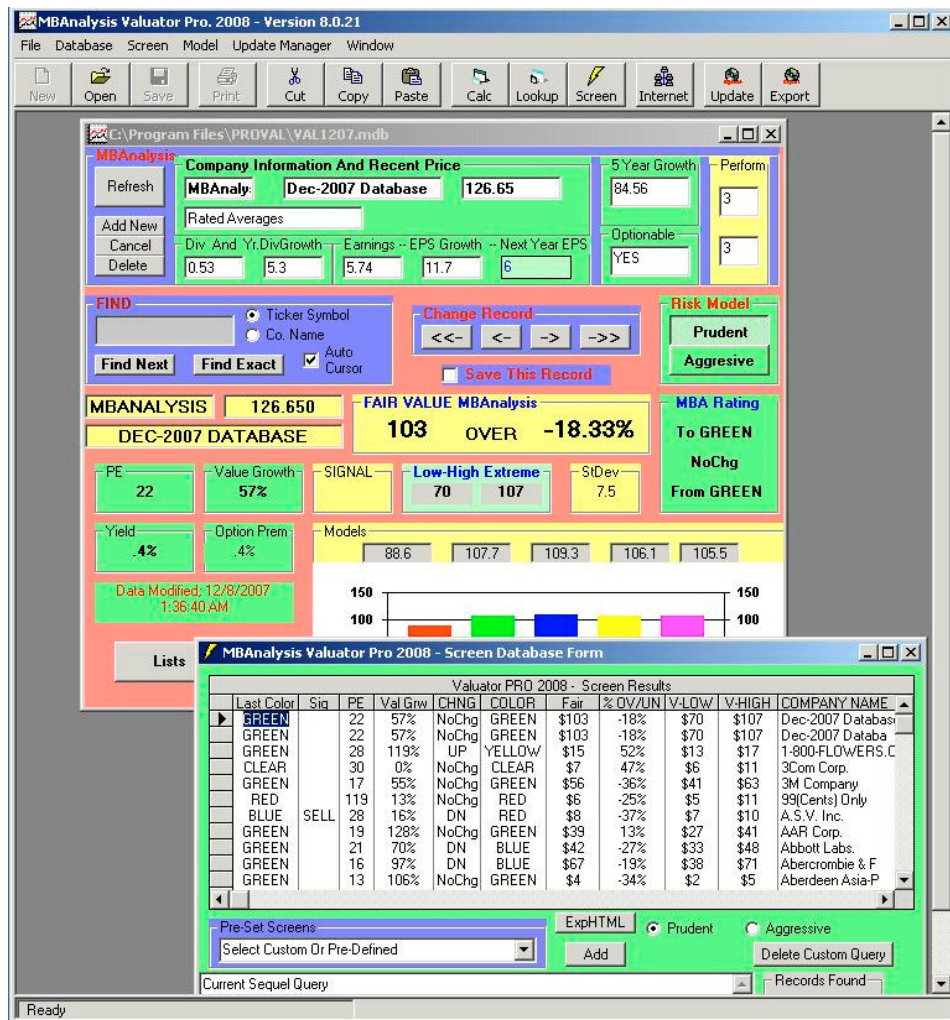
# MBA Analysis

Value Investing Research

## VALUATOR PRO

### Version 2008

### User's Manual



Valuation Software Offered Though *MBA Analysis*.

*International And Software Support*  
386-447-8148

## Valuator - Pro Control Center

## Valuator - Pro Update Manager

# **THE VALUATOR PRO™**

**2008**

**User's Manual**

**Version 2008**

All Rights Reserved  
Copyright © 1997-2008  
MBAAnalysis.

Printed in the U.S.A.

**US And  
International And Software Support  
386-447-8148**

## Table Of Contents

<b><i>AN INTRODUCTION TO - THE VALUATOR PRO - FROM MBANALYSIS:</i></b>	<b>7</b>
<b><i>INSTALLING THE SOFTWARE</i></b>	<b>8</b>
<b><i>INSTALLING DATABASE UPDATE</i></b>	<b>8</b>
<b>INTERNET DATABASE DOWNLOAD UPDATES</b>	<b>8</b>
<b>THE VALUATOR - PRO CONTROL CENTER</b>	<b>9</b>
<b>BASIC CONTROL CENTER OPERATIONS</b>	<b>9</b>
<b>CONTROL CENTER STATUS BAR</b>	<b>10</b>
<b>CONTROL CENTER PROGRESS BAR</b>	<b>10</b>
<b>THE VALUATOR - PRO CALCULATOR &amp; LOOKUP</b>	<b>11</b>
<b>CALCULATOR WINDOW (NEW FORM)</b>	<b>11</b>
<b>LOOKUP WINDOW (SMALL FORM)</b>	<b>11</b>
<b><i>GETTING STARTED WITH THE VALUATOR PRO CALCULATOR WINDOW</i></b>	<b>12</b>
<b>AUTO CURSOR CONTROL</b>	<b>13</b>
<b>SAVE BACK TO DATABASE BUTTON</b>	<b>13</b>
<b><i>USING THE - VALUATOR PRO SOFTWARE - AND VALUATION MODEL</i></b>	<b>14</b>
<b>SAVE BACK TO DATABASE BUTTON</b>	<b>17</b>
<b>REFRESH DATABASE BUTTON</b>	<b>17</b>

<b>SELECTION SCREEN WINDOW</b>	<b>18</b>
<b>SCREENING THE DATABASE</b>	<b>19</b>
<b>PRE-SET SCREENS</b>	<b>19</b>
<b>BUILDING CUSTOM SELECTION CRITERIA</b>	<b>19</b>
<b>SORTING THE OUTPUT RESULTS</b>	<b>20</b>
<b>SCREEN QUERY CONSTRUCTION TUTORIAL</b>	<b>21</b>
<b>EXPORTING AND PRINTING</b>	<b>22</b>
<b>PRINTING SINGLE TICKER REPORTS</b>	<b>23</b>
<b>PORTFOLIO AND LIST REPORTER</b>	<b>24</b>
<b>PORTFOLIO REPORT DISPLAY</b>	<b>26</b>
<b>PRINT PORTFOLIO</b>	<b>27</b>
<b>DISPLAY PORTFOLIO</b>	<b>27</b>
<b>THE VALUATOR - PRO UPDATE MANAGER</b>	<b>28</b>
<b>SETTING THE UPDATE INPUT</b>	<b>29</b>
<b>SELECT TARGET DATABASE FOR UPDATE</b>	<b>30</b>
<b>DATABASE POPULATION OPTIONS DURING UPDATE</b>	<b>31</b>
<b>START UPDATE</b>	<b>31</b>
<b>DATA STREAM BOX</b>	<b>31</b>
<b>AUTOMATIC AND TIME SCHEDULED UPDATES</b>	<b>32</b>
<b>AUTO UPDATE STATUS</b>	<b>32</b>
<b>AUTOMATIC INTERVAL SCHEDULE</b>	<b>33</b>
<b>OPENING MULTIPLE VALUATOR PRO WINDOWS</b>	<b>34</b>

<b>ARRANGING WINDOWS IN THE CONTROL CENTER.</b>	<b>35</b>
<b><i>KEEPING YOUR DATA UP-TO-DATE</i></b>	<b>36</b>
<b>INTERNET DATABASE UPDATER</b>	<b>36</b>
<b>CHECKING FOR NEW DATA</b>	<b>36</b>
<b>INTERNET DATABASE SETTINGS</b>	<b>37</b>
<b>ADVANCED SETTINGS</b>	<b>37</b>
<b><i>TROUBLESHOOTING INSTALLATION</i></b>	<b>38</b>
<b><i>UNINSTALLING</i></b>	<b>38</b>
<b><i>TROUBLESHOOTING WIN VISTA, 95-2000 XP &amp; NT INSTALLATION</i></b>	<b>38</b>
<b><i>UNINSTALLING WIN VISTA, 95-2000 XP &amp; NT</i></b>	<b>38</b>
<b><i>TROUBLESHOOTING DATABASE UPDATES</i></b>	<b>38</b>
<b><i>DATA ENTRY AND CALCULATIONS</i></b>	<b>39</b>
<b>DEFAULT SETTINGS ADVANCED OPTIONS</b>	<b>40</b>
<b>DEFAULT SETTINGS DATABASE OPTIONS</b>	<b>41</b>
<b>DEFAULT SETTINGS INTERNET UPDATE OPTIONS</b>	<b>42</b>
<b>DEFAULT SETTINGS GENERAL OPTIONS</b>	<b>43</b>
<b><i>TROUBLESHOOTING PROGRAM BUGS</i></b>	<b>43</b>
<b>APPENDIX</b>	<b>44</b>
<b>INPUT FILE FIELD DESIGNATIONS</b>	<b>44</b>
<b>SAMPLE SEQUEL QUERIES:</b>	<b>45</b>
<b>VALUE INVESTING COMMON SENSE</b>	<b>46</b>
<b><i>INDEX</i></b>	<b>48</b>

## ***An Introduction To - The VALUATOR PRO - From MBAnalysis:***

*The MBAnalysis Valuator PRO Software* provides the serious investor tools to assist in refining investment decisions. We have developed methods that combine fundamental and technical analysis to accomplish that goal.

We have found that opportunities exist in one or more industries at any time; therefore, we analyze individual companies, not industry groups. Our work searches for value that can be bought at a prudent price.

We use a fundamental, bottoms up approach and draw deeply from such classical writers as Graham & Dodd. Our proprietary models have yielded techniques that we have used profitably over the years. These techniques yield an accurate sense of a stock's Fair Value as well as low and high extremes that should contain nearly all price fluctuation.

In most cases technical analysis confirms our conclusions. Occasionally we receive aberrant values that signal us not to buy a stock whatever its fundamental value. We accept this advice and wait for a better day.

Our *Fair Value* sets the price at which an investor, acting from the prudent-man rule, might profitably acquire a stock. Selling decisions are a difficult matter, best determined by the level of risk and over-valuation an investor will tolerate, the amount of profit sought, or the anticipated time horizon for holding a specific issue.

*MBAnalysis* cannot assign a level of risk useful for investors. That decision depends upon factors which are confidential as well as extraneous to our analysis. Prudent and Aggressive Modeling is included to accommodate differing Risk Tolerance expectations.

We assume our investors understand that they alone, assume all risks involved with their investment decisions.

*MBAnalysis Valuator PRO Software* covers a broad spectrum of more than 1800 investment possibilities ranging from well known, large capitalization-international corporations, to medium capitalization companies, to small innovative special niche companies.

Whether you are a conservative long term low risk investor or a high risk aggressive trader, *MBAnalysis Valuator PRO Software* could help you achieve your investment goals.

## ***INSTALLING THE SOFTWARE***

**For Windows Vista, NT and 95-2000:** From the **START** menu, select **RUN**.

ALWAYS INSTALL To The Default Directory.

1. Insert the Installation Disk 1 in the computer's floppy drive (or the CD into the CD ROM drive).
2. Press **START** select **Run**
3. In the Command line box, type the letter for your computer's floppy disk drive (if using floppy disks) or CD ROM drive (if using the CD), followed by **:VALPRO32\SETUP** (for floppy A:\SETUP or for CD-ROM D:\VALPRO32\SETUP).
4. Click **OK** and follow the instructions on your computer screen.

## ***INSTALLING DATABASE UPDATE***

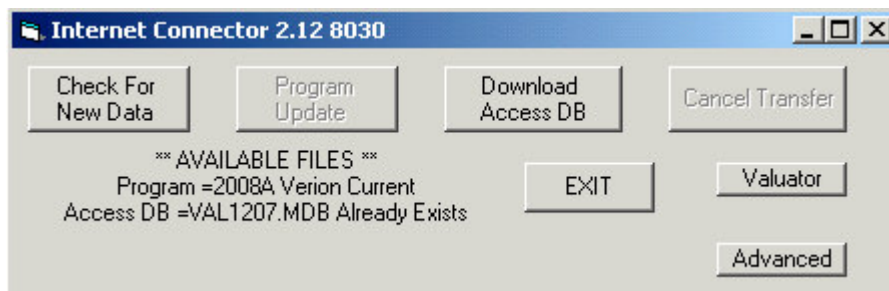
**For Windows Vista, NT and 95-2000:** \*

Select the diskettes marked Database:

1. Insert the Database Disk 1 in the computer's floppy drive (or the CD into the CD ROM drive).
2. From the **START** menu, select **RUN**.
3. In the Command line box, type the letter for your computer's floppy disk drive (if using floppy disks) or CD ROM drive (if using the CD), followed by **:DATALOAD.BAT** (for example A:\DATALOAD.BAT or D:\DATALOAD.BAT).
4. Your Data Will Be Updated To The \Program Files \VALUATOR PRO Directory.  
When Prompted enter the Drive Letter For your Update Diskette

***\*YOU MAY ALWAYS INSTALL THE DATABASE UPDATE BY COPYING ALL FILES TO YOUR DEFAULT INSTALLATION PROGRAM DIRECTORY.***

## **Internet Database Download Updates**



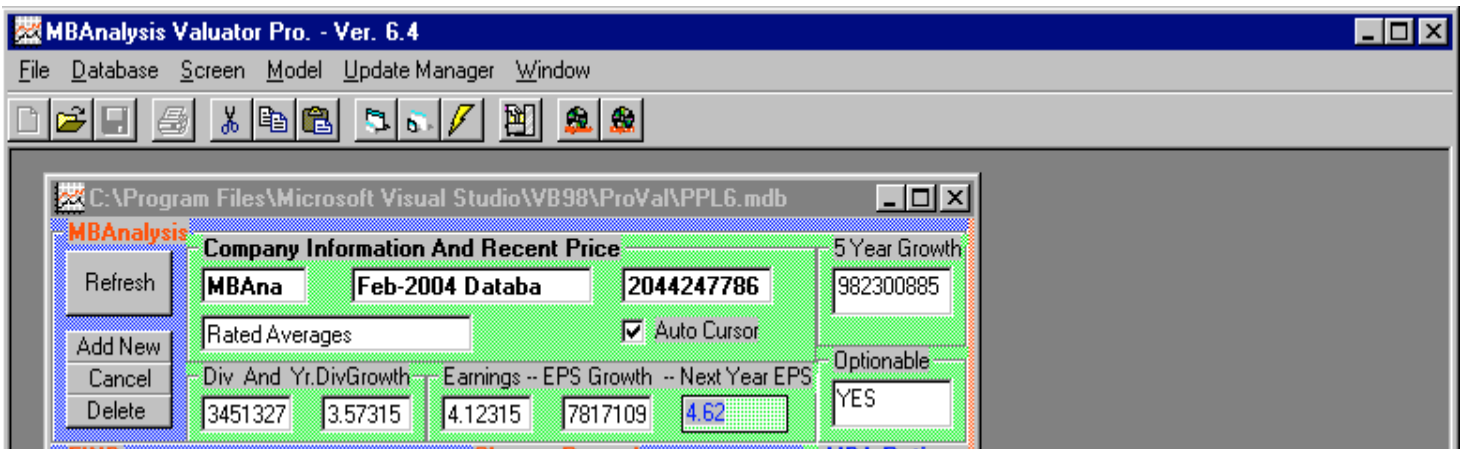
From the main Valuator Screen Select Either Icon



Click **CHECK FOR NEW DATA** Button



## The Valuator - Pro Control Center



When you first start the Valuator Pro, the Control Center Window is Opened and A default calculator window is presented. There are some tasks that may only be performed from the Control Center Window. To perform these functions, all windows in the control center must first be closed.

After all windows in the control center have been closed, you may perform the following tasks.

**Create New Database:** Creates a NEW DATABASE for user data entry. The database will contain a single default record for you to Open and Add To or Modify. **This is the best way to create a NEW EMPTY DATABASE.**

**Clone Database:** Clones an EXISTING DATABASE creating AN EXACT DUPLICATE. This is useful for preserving a **Backup Copy of an Existing Database**, Before modification or to **Preserve the Existing Data For HISTORICAL** use at another time. You **Must Choose A Different Name than the source file** For The Database Clone to be created.

## Basic Control Center Operations



**Calculator (New):** Selecting the Calculator Icon, Or New From the drop down menu, will open a new calculator window using the Valuator default database. At that time, you May open **another** database for the window by selecting the Open Database Icon or by selecting Open Database, From the DATABASE drop down menu.

**See Getting Started With The Valuator Pro or Using The- VALUATOR PRO SOFTWARE - And Valuation Model** for details on Using The Calculator.



**Lookup:** Selecting the LookUp Icon, Or Small From the drop down menu, will open a new LookUp window using the Valuator default database. At that time, you May open **another** database for the window by selecting the Open Database Icon or by selecting Open Database, From the DATABASE drop down menu.

**See Getting Started With The Valuator Pro or Using The- VALUATOR PRO SOFTWARE - And Valuation Model** for details on Using The LookUp Window.

**View Data Input:** Will also Make Visible the Data Input Area of the Valuator. You May Change the Input assumptions for the Calculation.

**View Full:** Will allow the User Access to all the input and output areas for changes to the security.

**View Small:** Sets the window to the default size for quick LookUp and Valuation results.



**Screen:** Opens The Screen-Filter Window. From here you may perform SELECTION AND FILTERING on the connected database. **See SCREENING THE DATABASE or SELECTION SCREEN WINDOW** for more details on using the Selection and filtering Criteria.



**Open Database:** Used to connect the current ACTIVE window to a specific database.



**Update:** Opens the UPDATE MANAGER Window. From here you may perform UPDATES on any Database. **See Using The UPDATE MANAGER** for more details on using the Database Manager to maintain your data.



**Export - Print:** Opens the EXPORT - PRINT Window. From here you may perform OUTPUT on any Database. **See Using The Export - Print Functions** for more details on using the Export and print functions to **Output HTML files For WWW Publication, Print to A FILE Or Print Reports To The System Printer.**

## Control Center Status Bar



**Status Bar:** The bottom of the Control Center window contains the status bar. The status bar will contain information about operations currently under way that may require the user to wait for completion before proceeding. The status bar will show the progress of actions by displaying a red Progress bar as the operation proceeds. Please wait until the READY message appears before continuing with operation.

## Control Center Progress Bar

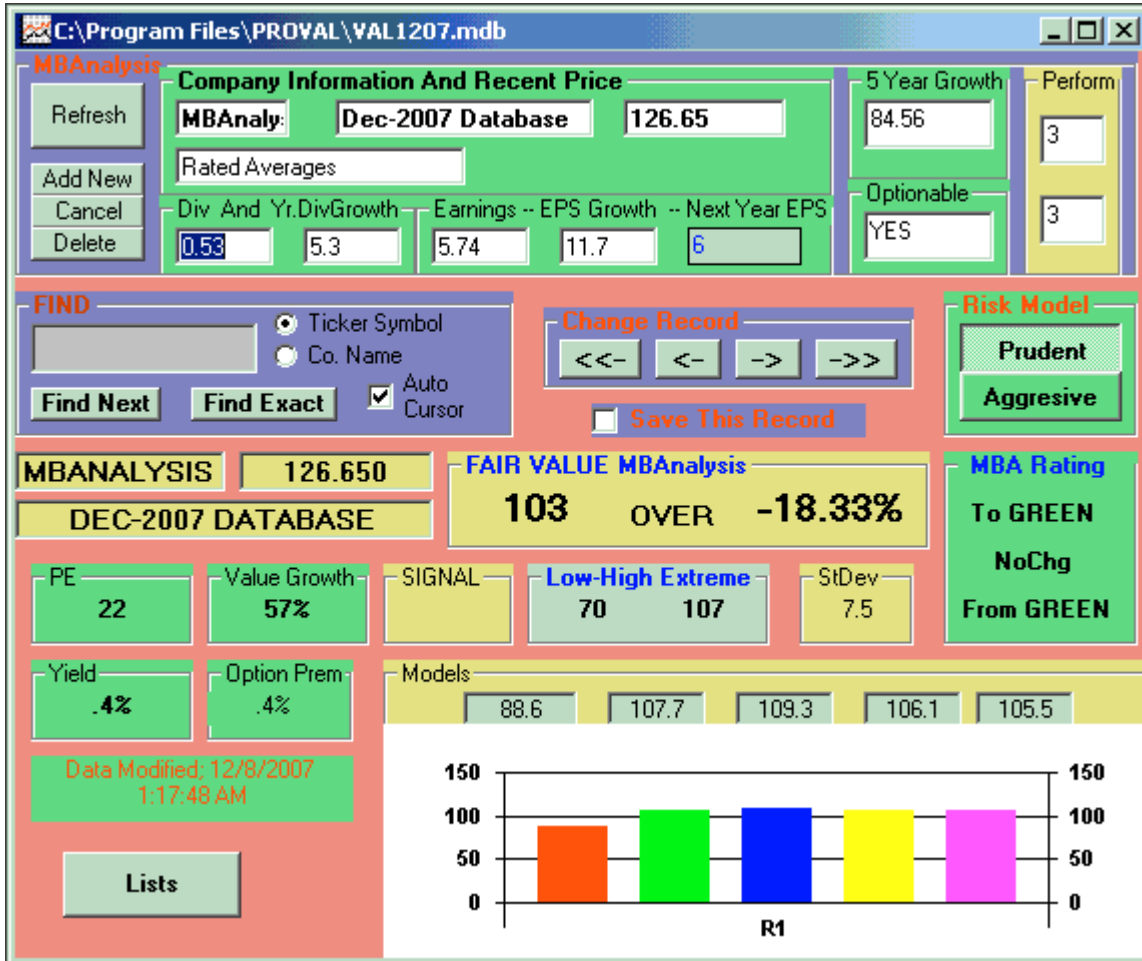


The Progress bar is located at the bottom of the main Valuator Pro Control Window, It will indicate the progress of calculation operations which the system is in the process of performing. For proper operation the Red Needle Gauge should fill from left to right as the operation proceeds.

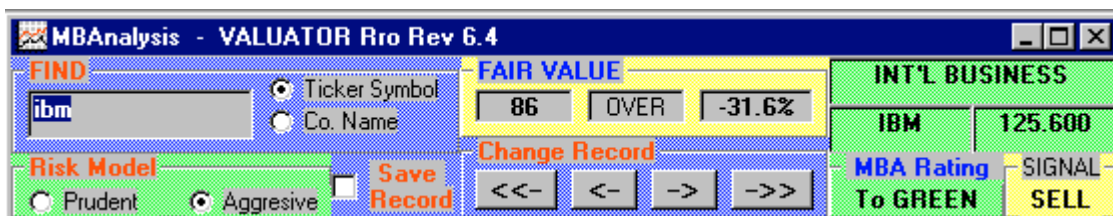
## The Valuator - Pro Calculator & LookUp

**Calculator And LookUp Windows:** Valuator Pro Calculator And Lookup Windows Function in nearly identical manor. The Primary difference is the manor and presentation of the data.

### Calculator Window (New Form)



### LookUp Window (Small Form)



## Getting Started With The Valuator PRO Calculator Window

Data Entry. To enter data into an accessible field, place the cursor in the data Field you wish to modify, and press the left mouse button to select the field. Enter your new data, or delete the exiting value and enter your own. Press the ENTER KEY and the valuation will recalculate using your values.

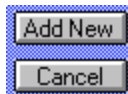
The User May Change Values for The Database Only in The Upper Half of the screen entitled: The Database.

The screenshot shows a window titled "The Database" with a green background. It is divided into several sections:

- Company Information And Recent Price:** Contains text boxes for "IBM", "INT'L BUS MACH", and "95.4375". Below this is a text box for "Computer/Periph".
- 5 Year Growth:** A text box containing the value "45".
- Optionable:** A text box containing the value "CBOE".
- Financial Data:** A row of five text boxes labeled "Div And Yr.DivGrowth", "Earnings --", "EPS Growth --", "Next Year EPS", and "7.36". The values in these boxes are "0.8", "14.5", "6.37", "15.5", and "7.36" respectively.

In Addition, you may not change the Symbol Or Company name for Tickers already in the Database. If you wish to change these fields, you must Add a New Record. In The Add Record Mode these fields are able to be entered. The Order of the database is determined by the Company name.

After Entering a new value for one of the fields in the Database Window. Hit ENTER to recalculate the valuation data. You may run as many what if tests as you wish, data will only be permanently saved in the database if you check the Save THIS Record Check Box  **Save This Record** and then move to a different record.



The Cancel button will not undo changes that have been permanently saved to the database.

If no changes are to be saved, leave the checkbox  **Save This Record** empty or click it to deselect it. If you want to see the original values, move to a different record then move back, the original values will again appear and calculate.

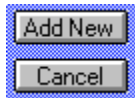
Saving Your Changes. Once you set a change in the database and Save it, the values are permanently changed in the database. The only way to recover the original values, is to reload the original database from your DATABASE DISK, thus loosing All changes you have made. In addition All Records You Have Added will need to be reentered. This is because you will be reinstating the original data provided by us.



The Prudent and Aggressive Model Selections. Prudent or Aggressive models will say in the mode you select for all stocks until you change it. Values always recalculate as you change between Prudent and Aggressive. Because there is only one set of input values in the database, any changes made in one model will apply to the other. Separate input values are not maintained for the two risk models. If you wish to maintain separate Input Values to use for one stock, you must enter duplicate records with a unique ticker symbol. For example, If you have data in the database of IBM and wish to maintain another set of input values, you must name the new record IBM1 or some other unique symbol for your duplicated data. You may then access that data by finding the symbol you have assigned.

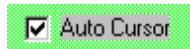


Using the Forward and Back Record Navigator. Press Forward Record -> or Back Record <- and the database record will advance to the next or previous record. Once you have clicked the forward or backward button, you can continue to move forward or backward one record at a time with the press of the ENTER key. The ENTER key will continue advance or reverse records until you select another input box or function.



Adding Records Or Accessing User Records. The Ticker field is a unique identifier for each stock. If you add a record with a Ticker Symbol that is already in the database, you will likely only be able to access the first incidence of the ticker in the database. All new records added to the Database, are added to the End Of The File in the active Database. Therefore to access a duplicate record, added by the user with a preexisting symbol, You must MANUALLY move to the End Of File (->>) and backspace through the records until you find the record you have added. You may delete the original record, then your newly added duplicate record will be accessible in the usual way. If you intend to maintain duplicate input values for Ticker Symbols, and wish to be able to access then quickly with the find box, you may add them using a unique New Symbol that you can remember and use. For Example. You may add a duplicate record for INTC as INTC1 one INTC2,Etc. Thus, you will be able to maintain and refer to duplicate data input records for any Symbol you wish. But remember, it is up to you to recall the unique Symbol you have assigned to reference the record.

## Auto Cursor Control



### Automatically Activates Calculator and LookUp Windows And Data Input Fields

**Auto Cursor:** Auto Cursor Selects a Data Input Field on Any Calculator or LookUp window when the cursor is moved over the box containing the Input Field. This option is enabled by default when checked. UnCheck this option to disable Auto Cursor. If auto cursor is disabled, you must place the cursor over the data entry box and click to enter data.

**Auto Activate:** Moving your pointer device across a Visible Data Entry Field on any Calculator or LookUp Window will Activate that window and Select that data Entry Field. This is a *Rapid way of moving between multiple Calculator and LookUp Windows.* **You may disable this function by Un-Checking the Auto Cursor Check Box.** This will affect only the window that is disabled. Any other window that is still enabled will continue to function in Auto Cursor Mode.

## Save Back To Database Button

Save Back To Database Button (Available only from SCREEN WINDOW Activated Windows) Allows use of Calculator Window to modify data in a screen window that contains data already populated. You may change an individual issue in your populated screen and then store the new values back in the populated data table.

## Using The - VALUATOR PRO SOFTWARE - And Valuation Model

If you are new to using the Valuation Model, it would be helpful to define the terms applied. Most terms and definitions can be found in any dictionary of financial terminology. Some terms proprietary to our model can not be easily found, and are explained in this section of the user manual.

### THE DATABASE:

Company Information And Recent Price			5 Year Growth
IBM	INT'L BUS MACH	95.4375	45
Computer/Periph			
Div And Yr.DivGrowth	Earnings -- EPS Growth -- Next Year EPS		Optionable
0.8	14.5	6.37 15.5	CBOE
		7.36	

When making changes to the values in the Database Fields, press the ENTER key and Valuation Model Results will Automatically Recalculate and Display the New Results.

Company Information And Recent Price		
TW	20TH CENTURY	25.75
Insurance: P/C		

- You may change the price or the Industry Group.

Div And 5Yr.DivGrowth
0.2 12.5

- The Dividend expressed in US Dollars and the 1 Year Expected Dividend Growth Rate -- e.i. Expected Dividend growth of 10% Per Year, Enter **10**.

Earnings -- EPS Growth -- Next Year EPS
6.37 15.5 7.36

- The expected Earnings Per Share and The **One Year** rate of Expected Growth in Earnings. If you expect earnings to grow 15% next year, then Enter **15**, **Next Year EPS** Will be Automatically Calculated and displayed.

5 Year Growth
-2

- The 5 Year Expected Growth Rate -- e.i. For An Expected growth of 10% Per Year, Enter **50**, 5Yr @ 10% . For 25% Per Year, Enter **125**. 5-Year Rate Of 25% Per Year.

Optionable
CBOE

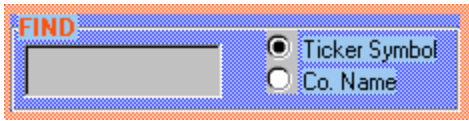
- Whether Exchange Listed Options Are Traded On This Issue. If No Option trades on this issue Enter NONE.

Add New
Cancel

- These controls are used to modify the database. You may Add new records (which are positioned at the end of the current Database) or Cancel the addition of a record to the database. Other operations, such as delete, or changes made to values, are not affected by the use of the Cancel control.

**Delete Current Record**

- This Control Deletes the Current Record positioned in the Database Window. A dialog box will ask you to confirm this deletion. Any Record in the database may be deleted. Once a record is deleted it may NOT BE RECOVERED by the use of the Cancel control.



- **FIND** -- Begin Typing in this box and the Database will advance to the closest matching security in the database.

## Find Exact - Find Next



**Exact:** Find Exact will look for the exact contents of the Find Box. If no exact match is found, the data pointer will remain on the currently selected record.

**Next:** Find Next will move to the next record containing the characters entered in the Find Box. If no other record exists later in the database the record will remain unchanged.

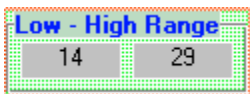


- Database Navigator Beginning of File - Back One Record, Forward One Record - End of File. Advancing to the next record will save any changes you have made to the database values.

- But ONLY IF YOU HAVE Save This Record  **Save This Record** Checked Before You Change Records.
- Save Changes to record  **Save This Record** Must be checked for the changes you make to be saved to the database. Otherwise any changes you make will be discarded as soon as you move to a different record. This box will be automatically enabled when you add a new record, and automatically disabled when you move to a subsequent record.

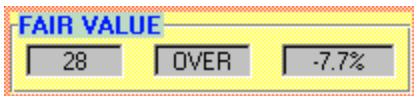


- **Value Growth** -- Value Growth is a measure of the anticipated growth and yield, discounted by P/E and expressed as a percentage. It represents the likely performance of a given issue relative to the market as a whole. Those greater than the current average or an arbitrary 100%, should perform better than the market average. Those less than the current average or an arbitrary 100% should perform less well than the market average. From time to time the average value of the market may vary from 60% to 120% depending on the selected universe of stock issues. This method gauges the growth and the cost of buying earnings for a given issue. OTC Stocks of course, should be expected to have higher values relative to large cap slower growth issues.

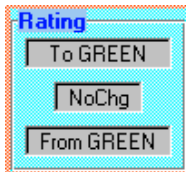


- **HIGH - LOW - FAIR** Based on current information, **FAIR** is our calculated **Fair Value** for this issue. The High and Low are the range of prices that should contain all movement in an issue's price. Extreme ranging in HIGH - LOW, as well as negative values, should alert the reader to potentially aberrant conditions that have skewed the valuation, thereby questioning it's validity. We question such issues and their values..



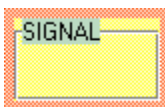


- **Percentage Over / Under** - Represents the percentage that the current price is Over or Under Fair Value.

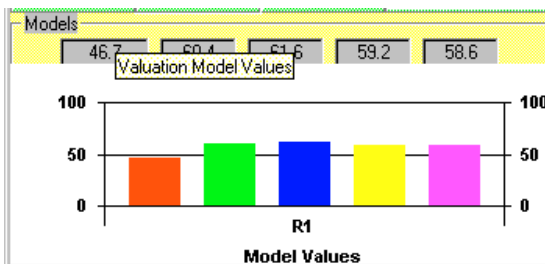


- **Color Designation** -- An important ingredient in the process of selection is our proprietary Color Designation assigned to each issue. Color Designation is determined on the basis of expected relative price movement primarily in the 3-6 month horizon and predicted relative market performance in the year ahead. Upgrades and downgrades - in subsequent reports as shown by changes in color, should guide you in your decisions.

- **Yellow** -- The most positive of the designations indicates expected out performance. Cautious Buying and Holding for further appreciation is suggested. Issues dropping from Yellow to a lesser designation should be considered for sale.
- **Green** -- Green designations signal good opportunities for possible accumulation. Such issues are expected to perform in-line with the market overall. These issues may be held in anticipation of better future performance or upgrades in color.
- **Blue** -- Blue designations suggest under-performance relative to the market. Caution is in order. Issues rising from RED designation to blue may signal better potential. Falling color designation to BLUE should alert one to a potential for under-performance.
- **RED** -- Red designations identify issues to be avoided now. These issues are expected to under-perform significantly.
- **Clear** -- Issues designated as Clear are NOT RATED. Usually this designation marks the many over-the-counter issues which we do not rate.



- **Signals** -- If the line: "Signal is; BUY or SELL" should appear, it is designed to alert the reader to a substantially over or under valued issue. Remember, an issue that is aberrantly over or under valued may be that way for good reason, such as news of takeovers or introduction of new products, and could stay in that condition for an extended time. In and of itself, this indicator should not cause the reader to act unless other values, signals, and further research on the readers part, confirm this indicator.

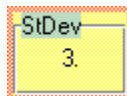


- **Model Values** -- Valuation is calculated using 5 different models. The values for these models are shown here as well as graphically represented. This can be used to see if any model in particular is generating unusual values.

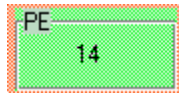


- **Risk Model** -- Changing the valuation Risk Model will recalculate values. Prudent models will usually produce a lower Fair Value, than the aggressive model. Aggressive models assume a shorter time horizon and a smaller expected rate of return. Prudent models suggest purchase at a lower price with higher returns expected.

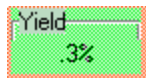




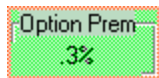
- Standard Deviation -- This is the variance in the 5 different Valuation models. In an ideal world this number will be small. Unusually high values suggest large differences in the values of the individual models.



- PE - The Price Earnings Ratio -- A conventional benchmark of valuation, PE Is The Price Divided By The Expected Earnings For A Given Issue. PE represents the relative cost of purchasing earning power.

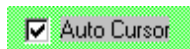


- Yield -- The Current Dividend Divided By The Price Of An Issue.



- Options Premium -- Anticipated Return From The Sale Of Out Of The Money Covered Option Writes. Return can be enhanced by prudent sale of out of the money Puts and Calls, against long or short positions in the underlying stock.

## Auto Cursor Control



### Automatically Activates Calculator and LookUp Windows And Data Input Fields

**Auto Cursor:** Auto Cursor Selects a Data Input Field on Any Calculator or LookUp window when the cursor is moved over the box containing the Input Field. This option is enabled by default when checked. UnCheck this option to disable Auto Cursor. If auto cursor is disabled, you must place the cursor over the data entry box and click to enter data.

**Auto Activate:** Moving your pointer device across a Visible Data Entry Field on any Calculator or LookUp Window will Activate that window and Select that data Entry Field. This is a *Rapid way of moving between multiple Calculator and LookUp Windows.* **You may disable this function by Un-Checking the Auto Cursor Check Box.** This will affect only the window that is disabled. Any other window that is still enabled will continue to function in Auto Cursor Mode.

### Save Back To Database Button

Save Back To Database Button (Available only from SCREEN WINDOW Activated Windows) Allows use of Calculator Window to modify data in a screen window that contains data already populated. You may change an individual issue in your populated screen and then store the new values back in the populated data table.

### Refresh Database Button

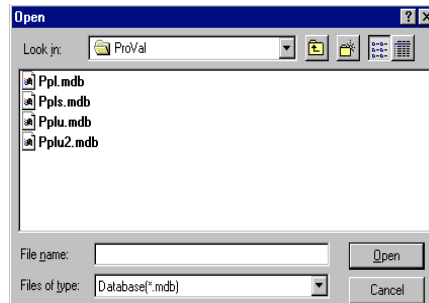
The Refresh Database Button will reload the current database and reflect the addition of new records. When the update manager adds new records those records might not appear in currently open windows.

## Selection Screen Window

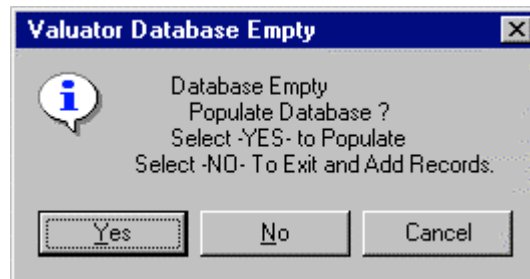
**Open The Database For Screening:** Click on the window to Open a Dialog Box and select the ***Database You Wish To Connect to the Screen Window.***



Select the Location for the **Valuator Pro Compatible Database You wish To Open.** Select the Database by clicking on the appropriate file name with your mouse or pointing device. Then Press ENTER or Click the OPEN button to open the database.

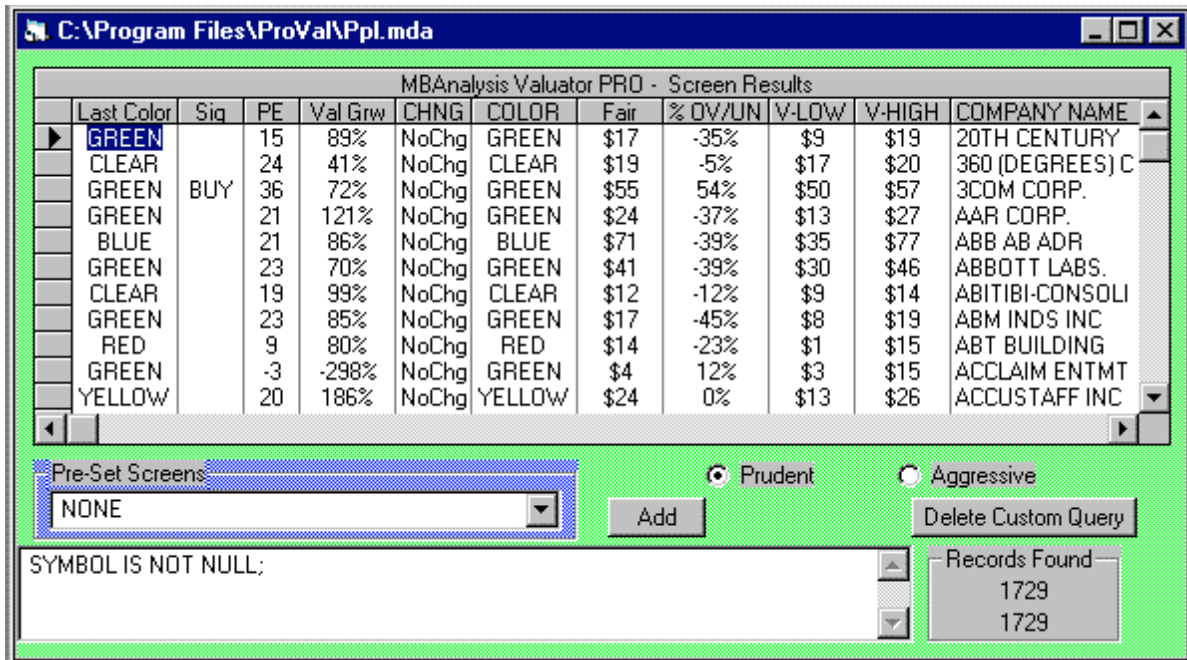


If the INPUT Data has not already been calculated you will need to **POPULATE The Database** in order to have Valuation Data to screen. Select Yes To Populate.



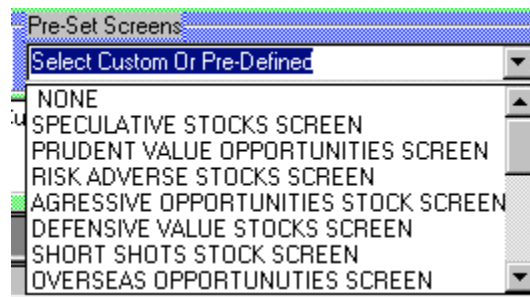
Depending on Machine Processing Power and Database Size, **This operation may take Several Seconds Or Several Minutes.** You will see Results appearing in the screen window as they are being calculated, **But You Must Wait For The Process To Complete** Before proceeding to screen or filter the data. You may Monitor the progress of the calculation **By noting the Progress on the RED Needle Gauge at the Bottom of the Control Center Window.** Once the operation is complete Your data is ready to Filter To select the Stocks That Meet Your Criteria.

## Screening The Database



## Pre-Set Screens

**Select Custom Or Pre-Defined Screen:** Valuator Pro provides a number of pre defined screens to help get you started. As you become aware of the general method to filter the data you may **Set Your Own Custom Filter Criteria**. Note how the filters are produced by viewing the contents of the Current Sequel Query Box at the bottom of the screen window.



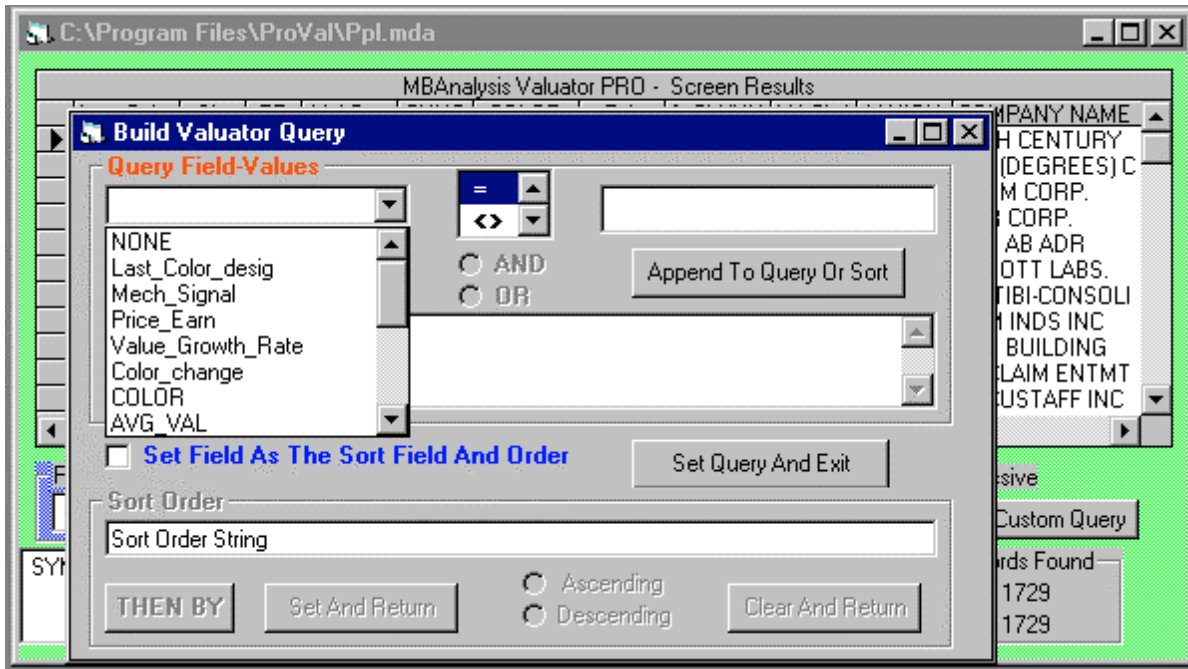
Select one of the pre-defined Screens Or Custom screens you have available in the Database To which you are connected. REMEMBER-- **Each Database may contain its own custom Screens that you have created and saved. All Databases will have Pre-Defined Screens Available.**

**Select NONE to remove all filtering criteria in effect and return the complete set of Data.**

## Building Custom Selection Criteria

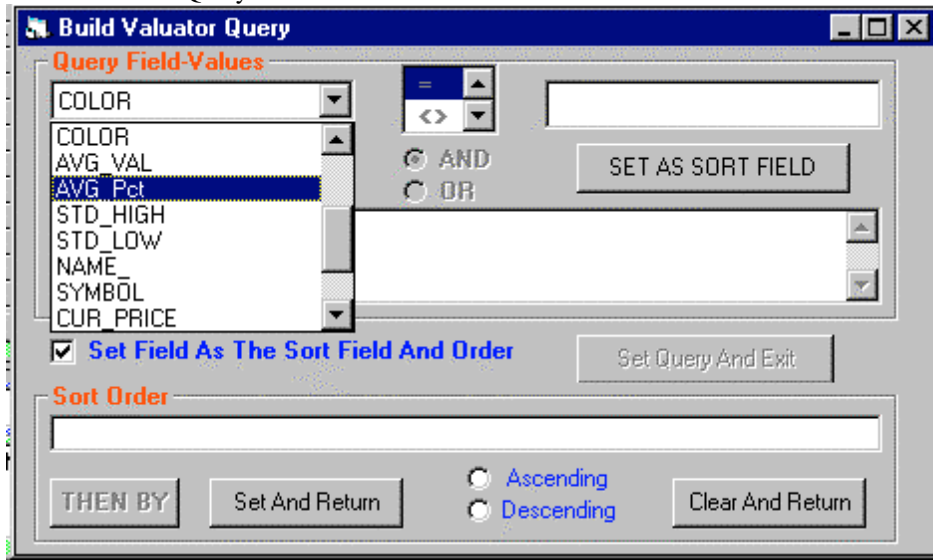
**Press ADD Button to Display the Custom Query Builder.** The Valuator Query Builder window will allow you to build simple or Complex SEQUEL based queries to Run Against the Database. Building Sequel Queries can be a tricky proposition. You should study the Pre Defined queries included with the Valuator Pro to Help get you started with building your own custom queries. The order and LOGIC of your query can greatly affect the OUTPUT

Recordset you Receive Including NO results for invalid queries - or those with faulty logic. Make your first queries simple, and build your complex logic in steps.



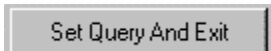
## Sorting The Output Results

Choose a field to sort the Data Query. The Select SET AS SORT Button to Place sort Field in the Sort Order Box.

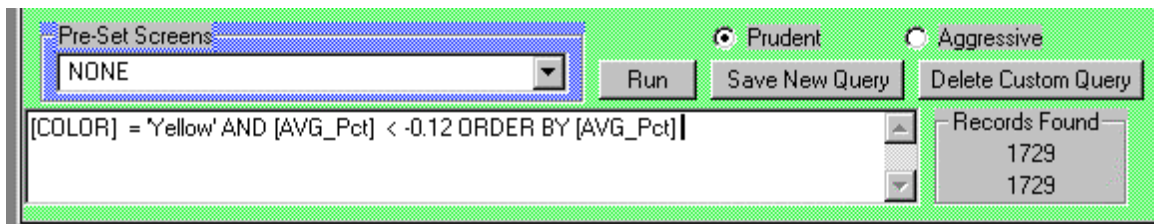


Press SET AND RETURN Button to SET SORT FIELD. *REMEMBER* -- to specify ASCENDING or DESCENDING sort or the sort will default to ASCENDING.

Then Set the Query and Exit



Now Press RUN to Run the query on the database.



## Screen Query Construction Tutorial

### Building A Custom Query Screen Filter

Building a sequel query can be complex, in order to provide the filtering that a user desires. Let us walk through the construction of a Sample Sequel Query against our Database.

*Let us suppose that we wish to filter for the stocks that have been upgraded to a Green OR Yellow MBAnalysis Color Designation AND have a PE of less than or equal to 20 - AND are also Not rated sell.*

This simple query against the database can be built with the *Valuator Pro Query Builder*.

- First Open a Valuator Pro Screen window and attach a Valuator Pro compatible database. If the Database has not been populated, then you must populate before the data for the securities will appear in the window. Once data is visible we are ready to begin.
- Press ADD button to open the **Query Builder**.
- Press the down arrow next to the input box under QueryField. Select from the drop down list the first field to filter. **Highlight COLOR.**
- Set the Field comparison to "=" which may already be highlighted. For use of another comparator (Comparison Operator), scroll down and highlight the appropriate comparator.
- Place the Cursor (with a mouse click in the box) Then type in the value **green**. Press **APPEND TO QUERY OR SORT** Button. The words **[COLOR] = 'green'** will appear in the Query Box.
- **Now we will repeat the process for yellow.**
- **You will notice that the AND has been selected.** We Must Change this to **OR** Because GREEN OR YELLOW meets our criteria. Press the down arrow next to the input box under QueryField. Select from the drop down list the first field to filter. **Highlight COLOR.** Set the Field comparison to "=" which may already be highlighted. Place the Cursor in the Value Box (with a mouse click in the box) Then type in **Yellow**. Press **APPEND TO QUERY OR SORT** Button. The words **[COLOR] = 'green' OR [COLOR] = 'yellow'** will appear in the Query Box.
- Now we will filter for the stocks that have a PE of less than 20. Since a stock can have a negative number for the PE if the Earnings are negative, We must perform a TWO STEP process that will produce those PE's that are GREATER THAN 0 AND LESS THAN OR EQUAL TO 20.
- First Select Price\_Earn for the Query Field. Select "<=" for the comparator and Enter the Value of 20. **You will need to select AND to join the next clause..** Press **APPEND TO QUERY OR SORT** Button. Now Select Price\_Earn for the Query Field. Select ">" for the comparator and Enter the Value of 0. **Notice that the AND is still selected.** Press **APPEND TO QUERY OR SORT** Button. The words **[COLOR] = 'green' OR [COLOR] = 'yellow' AND [Price\_Earn] <= 20 AND [Price\_Earn] > 0** will appear in the Query Box. This will give us PE Values that are Greater than 0 AND Less than or Equal to 20
- Next We want to exclude all issues that may be rated as SELL. Press the down arrow next to the input box under QueryField. Select from the drop down list the field to filter. **Highlight Mech\_Signal.** Set the Field comparison to "<>" by highlighting. Place the Cursor (with a mouse click in the box) Then type in **DN**. Press **APPEND TO QUERY OR SORT** Button. The words **[COLOR] = 'green' OR [COLOR] = 'yellow' AND [Price\_Earn] <= 20 AND [Price\_Earn] > 0 AND [Mech\_Signal] <> 'DN'** will appear in the Query Box.

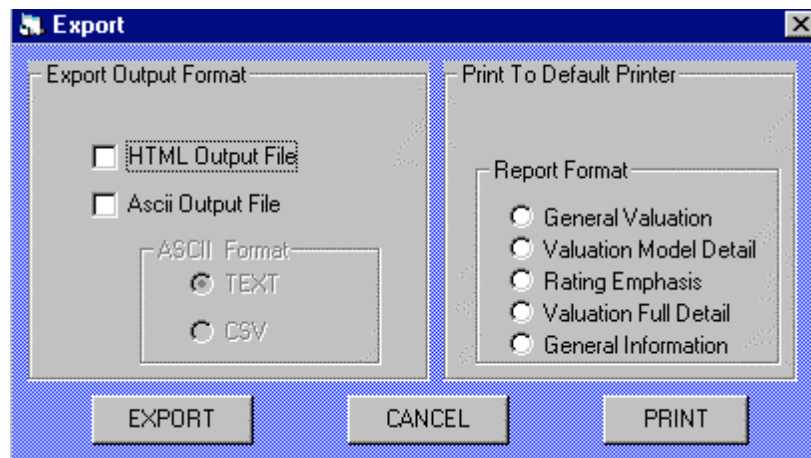
- To Finish, we now want to set the **Order** of the output by the Most Undervalued.
- Click The Check box for **SET FIELD AS THE SORT FIELD AND ORDER**. The Red Words SORT ORDER will now appear below. **Choose Ascending or Descending** with your pointer device. To Order the MOST UNDERVALUED FIRST on our list we must **Select DESCENDING**, so that Over Valued - Negative AVG\_Pct's will be at the bottom of our list and Positive Under Valued will appear at the top of our list.
- Press the down arrow next to the input box under QueryField. Select from the drop down list the field to filter. Select **AVG\_Pct**. Now **Press SET AS SORT FIELD Button**. Now Press **SET AND RETURN Button**. You will see [AVG\_Pct] DESC appear in the sort order box.
- Since we are now finished, **Press the SET QUERY AND EXIT Button**.
- The query Builder will close and we will be placed back to our Screen Form Window with our Query in the Query box.
- Press **RUN** Button to check the query for a valid set of Output Records. If no Records appear, there may be a fault in the query or in the logic structure. You May carefully edit the Query window directly if the mistake is apparent. Otherwise Press ADD to Re-Build your query again, and repeat the process to obtain a valid output recordset.
- **If you wish to save your Query In The Database for future use, Then Press SAVE NEW QUERY Button**. An input box will appear with a default Query Description Name. You may type in your own name or use the default presented. Press OK if done. The Word "Custom" will be inserted as a prefix to your name and will appear on the Pre-Set Screens Drop Down Box.
- Now Select your query if you did not already RUN it, by clicking the Pre-Set Screens Down Arrow and selecting the name you just saved. This will Run your Custom Query on the database. The results will appear in your Screen Window.

*Your Custom Query Is Now Finished And Has Been Stored In The Currently Connected Database For Future Use.*

## Exporting And Printing

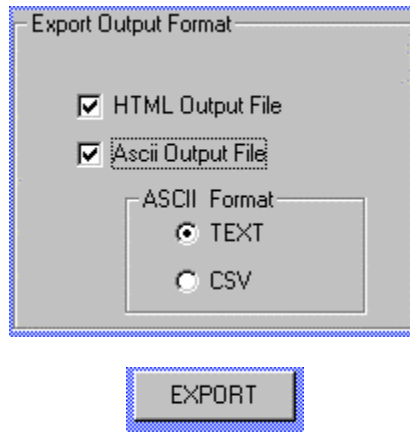


The OUTPUT results for your screened data may be exported or Printed to the system default printer. You may Output directly to an HTML file for publication on your web site, or to a text file ( ASCII or CSV) for use in your spreadsheet or word Processor.

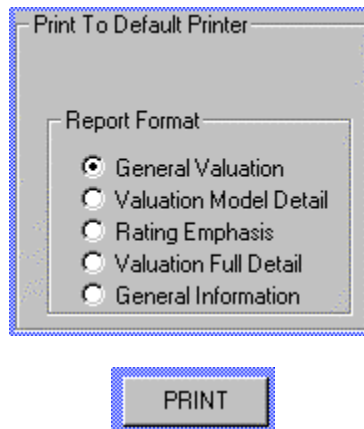


HTML and ASCII file may be output simultaneously by selecting both modes. When prompted for a file name, the same name will be used for both files with the appropriate File Extension (.HTM or .TXT).



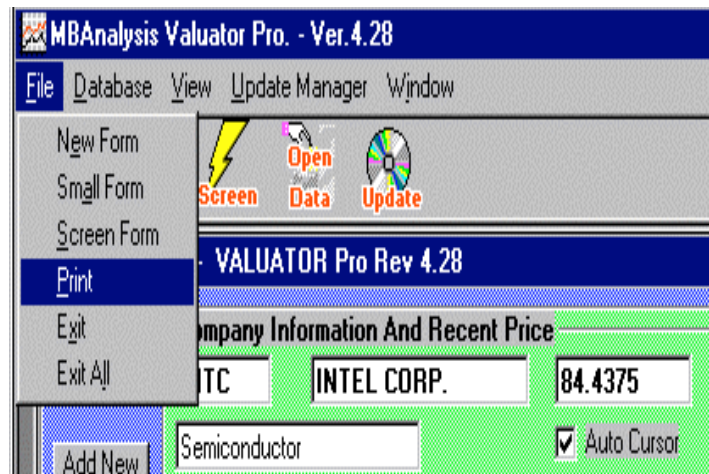


Your output results may also be directed to your System Default Printer by selecting the appropriate report format and pressing the print button.



## Printing Single Ticker Reports

**Single Ticker Reports:** Single Ticker Reports may be printed to your system printer from any *Valuator Pro Calculator or Lookup Window*. Single Ticker reports include data Input Assumptions As Well As Valuation Results. Although Single ticker reports may NOT be Printed From A Screen Window, you may select a symbol in the Screen Window with a single click then double click to open a Calculator window. The window that opens will contain the ticker you selected, and you may print the single ticker report to your printer.



## PORTFOLIO AND LIST REPORTER

PAGE 1 VALUATOR 2008 Portfolio Valuation Prudent Model 12/3/2007										
SYMBOL	NAME	CURRENT PRICE	FAIR VAL	AVG PCT	PRICE EARN	VALUE GROWTH	COLOR CMC	CURRENT COLOR	FUND SIG	INDUSTRY GROUP
AA	ALCOA INC.	36.370	\$31	-15%	13	100%	NoChg	GREEN		Metals & Mining
AIC	AMER. INT'L GRO	57.300	\$74	29%	9	150%	NoChg	GREEN		Financial Svcs.
AXP	AMER. EXPRESS	58.080	\$46	-21%	17	91%	NoChg	GREEN		Financial Svcs.
BA	BOEING	92.500	\$98	5%	19	132%	NoChg	GREEN		Aerospace/Defen
C	CITIGROUP INC.	32.820	\$35	7%	13	148%	NoChg	BLUE		Financial Svcs.
CAT	CATERPILLAR INC	71.650	\$68	-5%	13	148%	NoChg	GREEN		Machinery
DD	DU PONT	46.270	\$39	-16%	15	103%	NoChg	GREEN		Chemical (Basic
DIS	DISNEY (WALT)	33.230	\$28	-15%	15	107%	NoChg	GREEN		Entertainment
GE	GEN'L ELECTRIC	37.890	\$32	-16%	17	100%	UP	YELLOW		Electrical Equi
GM	GEN'L MOTORS	29.630	\$28	-4%	-66	-47%	NoChg	GREEN		Auto & Truck
HD	HOME DEPOT	28.640	\$34	20%	12	88%	NoChg	GREEN		Retail Building
HON	HONEYWELL INT'L	56.740	\$49	-14%	18	103%	NoChg	GREEN		Diversified Co.
HPQ	HEWLETT-PACKARD	50.960	\$45	-11%	17	107%	DN	GREEN		Computers/Perip
IBM	INT'L BUSINESS	105.940	\$94	-12%	15	106%	NoChg	GREEN		Computers/Perip
INTC	INTEL CORP.	26.150	\$17	-34%	23	55%	DN	GREEN		Semiconductor
JNJ	JOHNSON & JOHNS	67.660	\$50	-27%	16	79%	NoChg	GREEN		Medical Supplie
JPM	JPMORGAN CHASE	45.420	\$43	-5%	10	162%	DN	BLUE		Bank
KO	COCA-COLA	62.180	\$43	-30%	23	62%	NoChg	GREEN		Beverage
MCD	MCDONALD'S CORP	58.860	\$45	-23%	20	79%	NoChg	GREEN		Restaurant
MMM	3M COMPANY	83.260	\$54	-35%	17	58%	NoChg	GREEN		Chemical (Diver
MO	ALTRIA GROUP	77.030	\$45	-42%	18	46%	NoChg	CLEAR	SELL	Tobacco
MRK	MERCK & CO.	59.130	\$39	-34%	20	62%	DN	BLUE		Drug
MSFT	MICROSOFT CORP.	33.550	\$30	-10%	19	105%	NoChg	GREEN		Computer Softwa
PFE	PFIZER INC.	23.720	\$22	-7%	11	104%	NoChg	GREEN		Drug
PG	PROCTER & GAMBL	74.090	\$54	-28%	21	69%	NoChg	GREEN		Household Produ
T	AT&T INC.	38.320	\$37	-3%	14	161%	NoChg	GREEN		Telecom. Servic
UTX	UNITED TECHNOLO	74.790	\$60	-20%	18	93%	DN	GREEN		Diversified Co.

Portfolio List Report is a fully editable report window produced by loading Text File lists. These may be pre defined lists created with any text editor such as Notepad. List One Ticker on each Text Line.



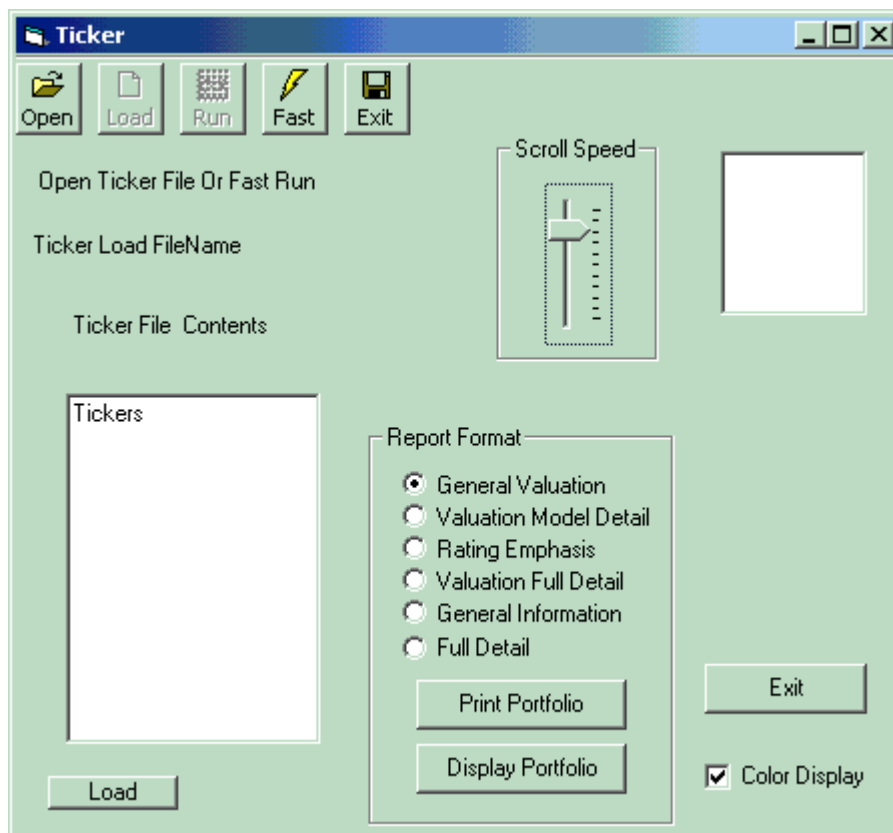
## PORTFOLIO LIST LOAD AND AUTO DISPLAY

To Create or Edit A list Or Portfolio Use the LOAD button to select a Text File previously saved, or type the list into the Tickers window, then select SAVE and name the file.

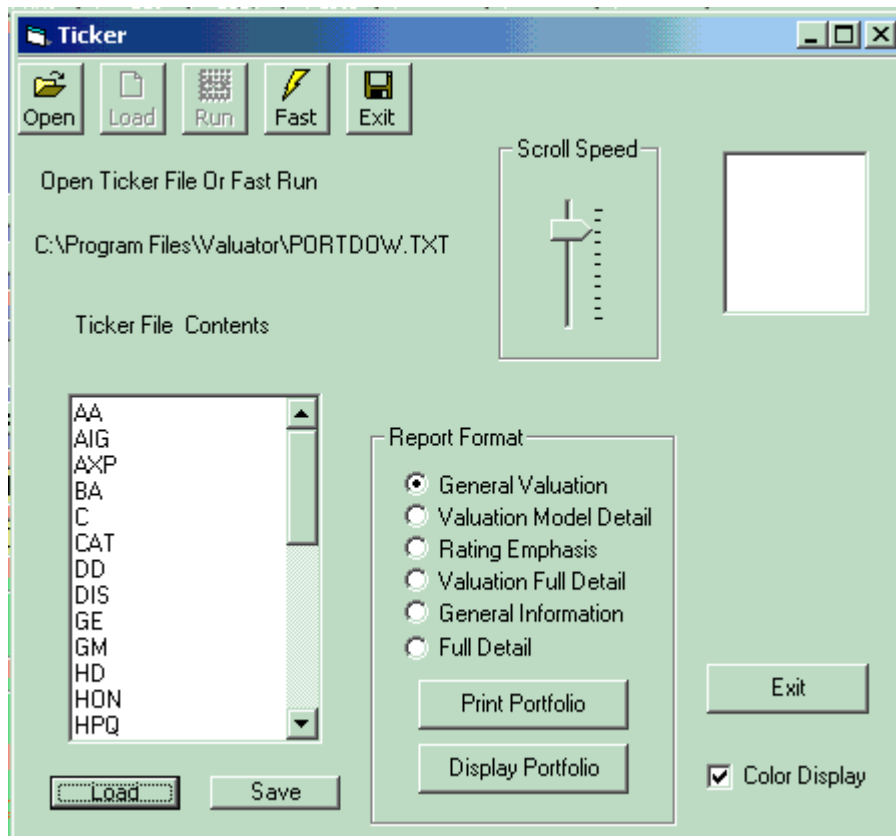
### Auto Display

Auto Display Uses the default Ticker File To display the Tickers in the Valuator window. The Auto Display may be stopped by selecting the STOP Button.

To use AUTO DISPLAY, select OPEN Icon and choose a previously saved Text File. Then Select LOAD Icon Then RUN Icon. Scroll Speed may be adjusted with the Scroll Speed Slider Control. Alternately, you may select the FAST Icon to Load the default Ticker file and display will begin.



## PORTFOLIO REPORT DISPLAY



To Create or Edit A list Or Portfolio Use the LOAD button to select a Text File previously saved, or type the list into the Tickers window, then select SAVE and name the file.

### DISPLAY PORTFOLIO

To DISPLAY a portfolio Report Press DISPLAY PORTFOLIO Button and Select the Text File containing the ticker list. Portfolio Report window will Open and Display the list of all Found Tickers.

You may choose any of the REPORT FORMAT choices for PRINT or DISPLAY functions.

You may Also Select COLOR DISPLAY Check Box to determine whether or not display will be shown in color.

EXIT Button or EXIT Icon will close this window and return to main Valuator window.

## PRINT Portfolio

To PRINT a portfolio Report Press PRINT PORTFOLIO Button and Select the Text File containing the ticker list. Portfolio Report will Print the list of all Found Tickers on the Printer you selected. You may choose any of the REPORT FORMAT choices for PRINT functions.

You may Also Select COLOR DISPLAY Check Box to determine whether or not display will be printed in color.

Remember Wide Reports will need to be printed in Landscape Printer Format in order to display correctly.

EXIT Button or EXIT Icon will close this window and return to main Valuator window.

## Display PORTFOLIO

PAGE 1 VALUATOR 2008 Portfolio Valuation Prudent Model 12/3/2007										
SYMBOL	NAME	CURRENT PRICE	FAIR VAL	AVG PCT	PRICE EARN	VALUE GROWTH	COLOR	CURRENT COLOR	FUND SIG	INDUSTRY GROUP
AA	ALCOA INC.	36.370	\$31	-15%	13	100%	NoChg	GREEN		Metals & Mining
AIG	AMER. INT'L GRO	57.300	\$74	29%	9	150%	NoChg	GREEN		Financial Svcs.
AXP	AMER. EXPRESS	58.080	\$46	-21%	17	91%	NoChg	GREEN		Financial Svcs.
BA	BOEING	92.500	\$98	5%	19	132%	NoChg	GREEN		Aerospace/Defen
C	CITICGROUP INC.	32.820	\$35	7%	13	148%	NoChg	BLUE		Financial Svcs.
CAT	CATERPILLAR INC	71.650	\$68	-5%	13	148%	NoChg	GREEN		Machinery
DD	DU PONT	46.270	\$39	-16%	15	103%	NoChg	GREEN		Chemical (Basic
DIS	DISNEY (WALT)	33.230	\$28	-15%	15	107%	NoChg	GREEN		Entertainment
GE	GEN'L ELECTRIC	37.890	\$32	-16%	17	100%	UP	YELLOW		Electrical Equi
GM	GEN'L MOTORS	29.630	\$28	-4%	-66	-47%	NoChg	GREEN		Auto & Truck
HD	HOME DEPOT	28.640	\$34	20%	12	88%	NoChg	GREEN		Retail Building
HON	HONEYWELL INT'L	56.740	\$49	-14%	18	103%	NoChg	GREEN		Diversified Co.
HPQ	HEWLETT-PACKARD	50.960	\$45	-11%	17	107%	DN	GREEN		Computers/Perip
IBM	INT'L BUSINESS	105.940	\$94	-12%	15	106%	NoChg	GREEN		Computers/Perip
INTC	INTEL CORP.	26.150	\$17	-34%	23	55%	DN	GREEN		Semiconductor
JNJ	JOHNSON & JOHNS	67.660	\$50	-27%	16	79%	NoChg	GREEN		Medical Supplie
JPM	JPMORGAN CHASE	45.420	\$43	-5%	10	162%	DN	BLUE		Bank
KO	COCA-COLA	62.180	\$43	-30%	23	62%	NoChg	GREEN		Beverage
MCD	MCDONALD'S CORP	58.860	\$45	-23%	20	79%	NoChg	GREEN		Restaurant
MMM	3M COMPANY	83.260	\$54	-35%	17	58%	NoChg	GREEN		Chemical (Diver
MO	ALTRIA GROUP	77.030	\$45	-42%	18	46%	NoChg	CLEAR	SELL	Tobacco
MRK	MERCK & CO.	59.130	\$39	-34%	20	62%	DN	BLUE		Drug
MSFT	MICROSOFT CORP.	33.550	\$30	-10%	19	105%	NoChg	GREEN		Computer Softwa
PFE	PFIZER INC.	23.720	\$22	-7%	11	104%	NoChg	GREEN		Drug
PG	PROCTER & GAMBL	74.090	\$54	-28%	21	69%	NoChg	GREEN		Household Produ
T	AT&T INC.	38.320	\$37	-3%	14	161%	NoChg	GREEN		Telecom. Servic
UTX	UNITED TECHNOLO	74.790	\$60	-20%	18	93%	DN	GREEN		Diversified Co.

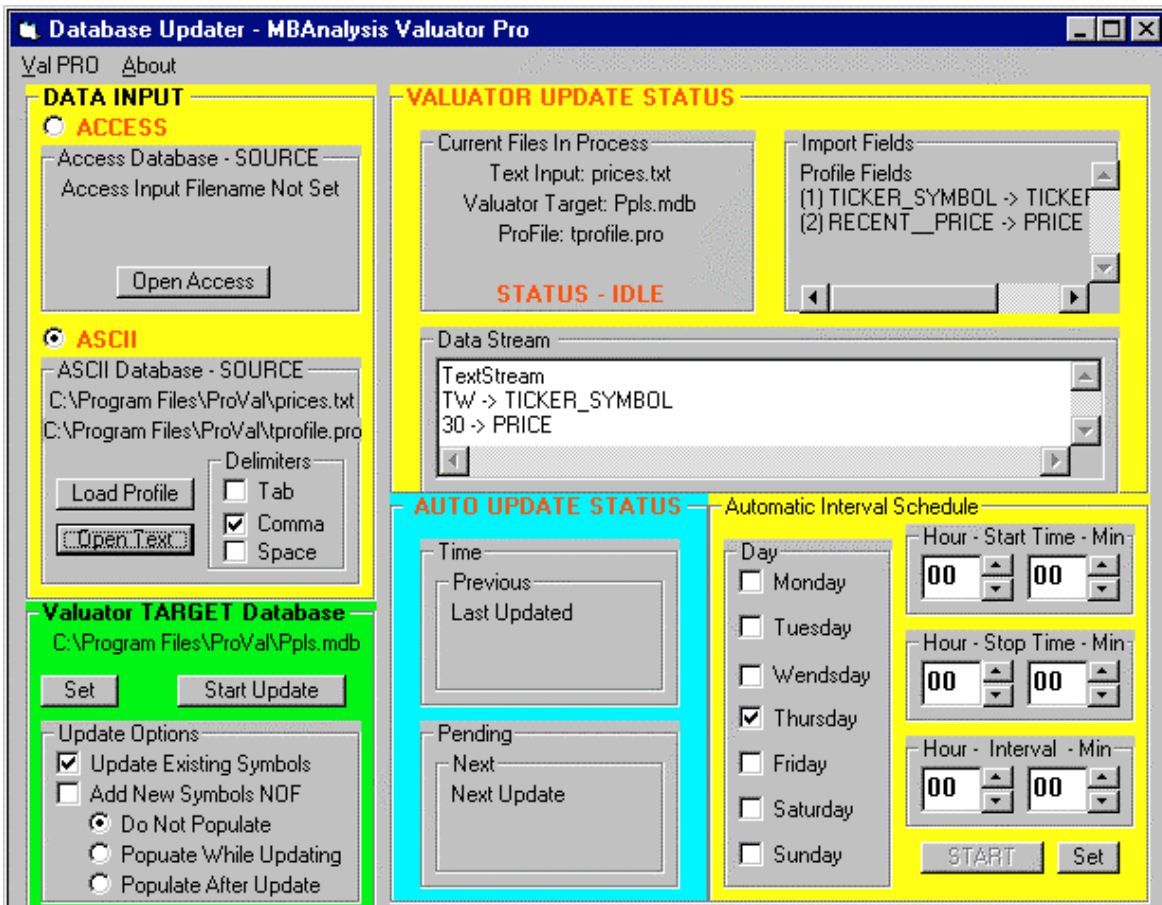
Display Portfolio is a fully editable Rich Text Format window. The results may be SAVED to a File in either RTF or TEXT format. Saving in Text Format will not retain color settings, Saving in RTF format will retain color.

EXIT Button will CLOSE the Display Window.

PRINT Button will allow printer selection and will print window contents to your printer.

FONTS Button will Display Font Selection Boxes to directly edit the text in the window. DEFAULT Button will allow you to Select and Retain new default font settings for the Display Window. Remember, to use a FIXED PITCH font such as Courier, or the display may not retain proper column alignment.

## The Valuator - Pro Update Manager



**When you first start the Valuator Pro UPDATE MANAGER The Control Window is Opened and presented.** Only One Instance Of the Update Manager is allowed. This window may be operated in conjunction with the Valuator Pro, or Remain open after The Valuator Control Center has been closed. This allows the user to program Immediate or Preset Scheduled updates. For All Updates, it will be necessary to set the Data Input Source and Valuator TARGET Database. You may use Microsoft Access Database sources or ASCII Text Files for input, assuming that the column headings or Profile Entries fall within the *Possible Data Field Descriptors*. **All Target Files Must Be Valuator Pro Compatible Microsoft Access Files** such as those produced by the Valuator Pro, or MBAnalysis Update Diskettes or Downloaded From Our Web Site.

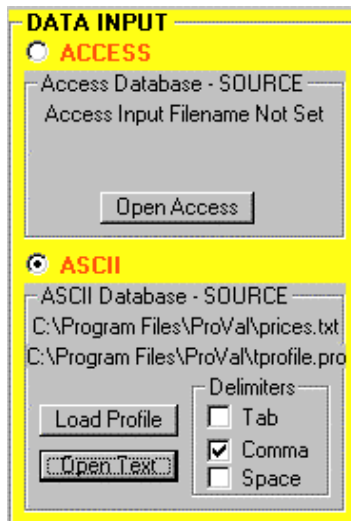
**ASCII Text Files and CSV(Comma Separated Variable):** Data may be merged or added to the database by the use of Simple Text Files. These files can be produced by almost any Spreadsheet Program as Output. This allows you to produce a wide range of imported data for your own use.

**DATA PROFILE FILE :** This is a Simple Text File, produced by such common programs as Windows Notepad, that contains a single field name on each successive line representing the order of the data contained in the columns of the INPUT DATA FILE. These *Profile Files* are necessary to tell the Valuator Update Manager What to expect to see from the Input Stream of data contained in your Update Input File. *These files are not necessary when you use the ACCESS type file, as this information comes from the FIELD DESCRIPTORS contained in the database file.*

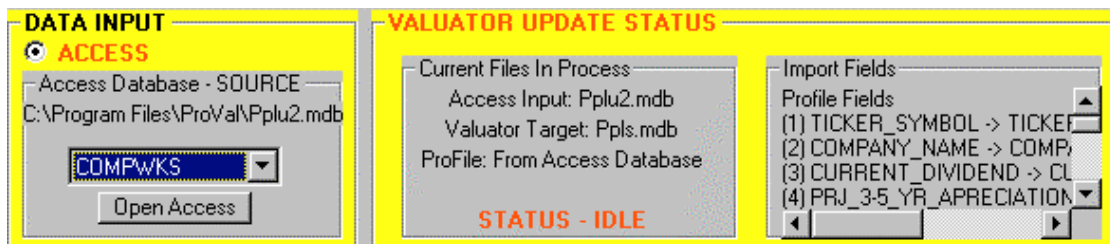
You may of course achieve a complete and thorough update of your data By using a *Valuator Pro Compatible Data Update File*. These Database Files Are *Available From MBAnalysis* and may be provided as *Data Update Diskettes* or *Downloaded from the MBAnalysis Web Site*. Be sure to check The *Valuator Pro Users Area* at [www.mbanalysis.com](http://www.mbanalysis.com) For a listing of available Databases, End Of Day and End Of Week Price Update Files, Sample Data Profile Files and Program UPDATES.

## Setting The Update Input

Select the TYPE of Source File To be Used. Select either an ACCESS type Data File Or An ASCII Type Of Data File.



**ACCESS INPUT:** Choosing the ACCESS Type of DATASOURCE will Offer you an OPEN FILE type dialog box. Double Click the Database Source File name or Highlight the File Name and Press Enter.

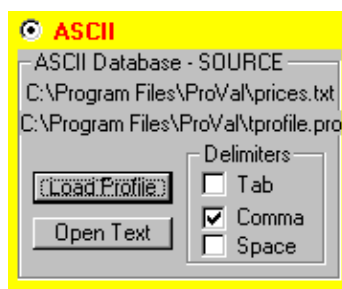


Use The DropDown Box To Select the desired table within the ACCESS Database.

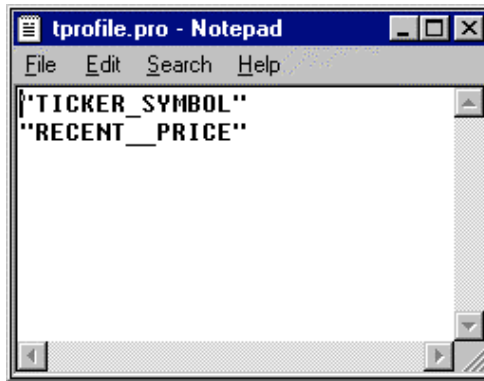
**This Input File Must Contain Fields That The Data Updater Will Recognize. See RECOGNIZABLE DATA FIELD DESIGNATIONS** For a List of Field Names that the Valuator Pro Will be able to process form the input table contained in the **ACCESS INPUT DATABASE**.

**Profile Files are used to set the data expectations for ASCII TEXT and CSV Files. Field Names in the ACCESS file contain this information.** You will see the listing of the Database Fields found in the table by looking in the **Import Fields** Box in the *Valuator Update Status Window*.

**ASCII File Input:** For ASCII Input You Must Set A *Profile* And a Text *Input File*.

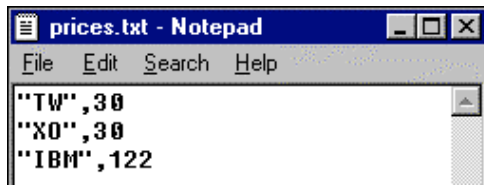


**Profile Files are used to set the data expectations for ASCII TEXT and CSV Files. Each Field Name in the ASCII file is listed on a separate line in the Profile File.**

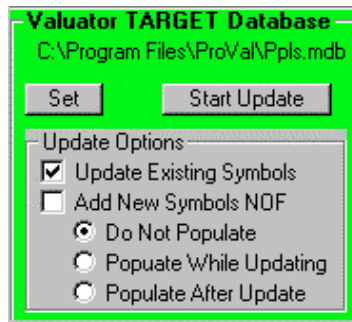


When you open a Profile File that contains Valid Field information, you will see the listing of the Database Fields found in the file by looking in the **Import Fields** Box in the *Valuator Update Status Window*.

**Selecting The ASCII data Input File:** Pressing The OPEN TEXT button in the Ascii Database - SOURCE Window will allow you to choose the **Source for the Raw Data** To Update Your Database. The PROFILE FILE should List EACH COLUMN OF DATA contained in the Input Stream Including the Designation SKIP where data in that column is to be ignored. The Example Below Uses CSV Data To Update Each Of The Symbols With The Latest Price Information. Each Column Contains a FIELD of data as Listed In the Profile. Each Line Contains Data For the SYMBOL in the database to be updated. *THE TICKER SYMBOL SHOULD ALWAYS BE THE FIRST FIELD IN YOUR INPUT. Although this is not necessary when using ACCESS database files.*



## Select Target Database For Update



**Setting The Target Database For Update:** Press the **SET** button in the *Valuator TARGET Database Window* to select the Database that will receive the updated data from your Input Stream. A OPEN FILE window will allow you to find your database and select the appropriate location.

**Update Options:** Sets the way the Update Manager will treat the Symbols Found In The Input Stream as well as Valuation Output Calculation method.

**Update Existing Symbols:** Symbols found in the TARGET DATABASE will be updated if they are contained in the Input File. Symbols not Contained in the TARGET *Will Not Be Updated* or Added To the Database.

**Add New Symbols Not On File:** Symbols found in the TARGET DATABASE will be updated if they are contained in the Input File. Symbols not Contained in the TARGET *Will Be ADDED* to



the Database. If your Input Data does not contain all the Field Information for a New Ticker, Default Values will be added. You must then be sure to replace the default values with those you deem appropriate to the Newly Added Issues after the update is complete. New symbols will be added at the end of the database file.

## Database Population Options During Update

Populating a Database During Update involves intensive calculations. **You should select a method consistent with your data Input File size and Target Database Size.** Selecting an inefficient Choice, may result in significant update time. It is best to tailor the Method to produce the most time - efficient result.

**Do Not Populate** : The Fastest method for updating is to Update the Data Without Populating During the Update Process. You may then populate the Valuation data at a later time.

**Populate While Updating**: Using this option will Update the target database and Populate The Valuation Tables in the database **as Each Symbol Receives a New Field Of Data.** This is **appropriate when a very small amount of data is to be Updated.** For a very few symbols in the Input file, this will allow **ONLY** the new issues to be Re-Calculated. **Using This Method with a large Input File WILL BE A VERY SLOW PROCESS.**

It is better to use the ***Do Not Populate or Populate After Update For Large Input Files.*** This will Postpone or Perform a Complete Recalculation on the Full Database after the Input data has been added to the database.

**Populate After Update** After the Input Data has Updated the Database, All Symbols in the Database will be re-calculated. This is the same as Selecting Populate From the Drop Down Menu for a Screen Window. This process will take a few seconds for a small database, or a few minutes for larger Target databases.

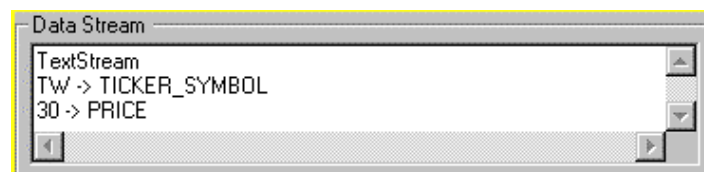
## Start Update

Click the START UPDATE button AFTER you have entered values for the DATA INPUT (ASCII Files Need A Profile And INPUT File Set) and TARGET DATABASE designations. This will begin the Updating process according to the options you have selected. **When Complete, You Will See A STATUS - IDLE appear in the CURRENT FILES IN PROCESS Box In The VALUATOR STATUS AREA. Indicating The Data Update Operation Has been Completed.**

## Data Stream Box

The Data Stream Box Will show the current Input Ticker Symbol after the words Data Stream during the Updating Process. This will Indicate The Current Ticker in process.

The Box Below will contain the input data and the Field for Update. You may examine the contents of this box in the event of an early termination of the data update process. This can happen when the input file contains data that the updater cannot process. You will be able to Identify where the update ended and correct the input file fields. This window will change every few tickers, but you may scroll down to see Input Data stream.



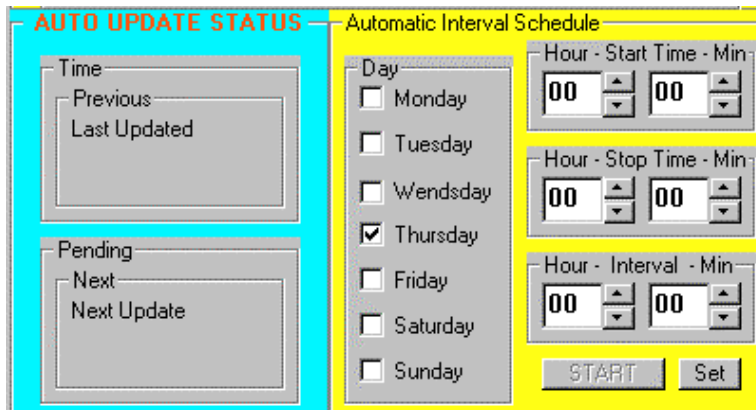
## Automatic And Time Scheduled Updates

### Intraday Updates

Valuator Pro may be set to perform periodic Updates throughout the trading day at intervals specified. If a new file is present, the Update manager will perform the update as specified in your Data Input and Target Database settings. If a New file is NOT present the Update Manager will skip the update and wait the specified interval to check for the presence of a new file.

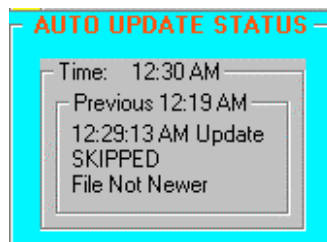
### End Of Day Updates

Valuator Pro may be set to perform Updates at a specific time at the end of the trading day as well as at intervals specified during the day. If a new file is present, or the first update is scheduled, the Update manager will perform the update as specified in your Data Input and Target Database settings. If a New file is NOT present because it was updated at a prior time, the Update Manager will skip the update and wait the specified interval to check for the presence of a new file.



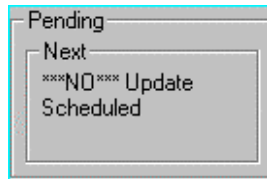
### Auto Update Status

**Previous:** Will indicate the Previously completed update and the time of completion. Time will indicate the last check for a new update file. If the Next check occurs before NEW DATA has been placed in the Input File The Update Will Be SKIPPED. This will be displayed Until New Data Causes the Update Manager to perform another update.

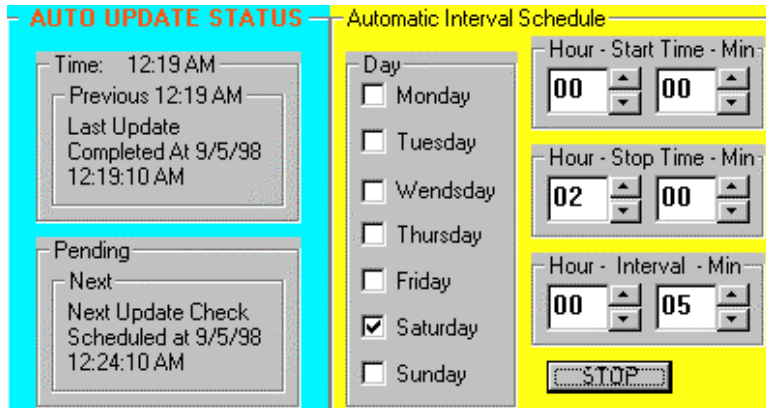




**Pending:** This will show the next pending update scheduled. When this time is reached, the update manager checks for a new file. When the STOP Time is reached the message will note that No Update Is Scheduled



**Scheduling Interval Updates:** You may specify a Time Window to check for new data. This will allow the Update Manager to Monitor and Automatically Update when the New data is found.



## Automatic Interval Schedule

**Day:** Set the Days Of the Week for the manager to schedule updates. When you start the Update Manager Today will be checked automatically. If you intend to leave the Manager operating for longer periods of time and wish it to perform its checks on a daily schedule, check each day of the week for which operation is desired.

**Hour - START TIME - Min:** Specifies the STARTING TIME in Hours and Minutes during which the manager will monitor for New Data. Hours may be set for 0-23. 00 Hours Corresponds to Midnight 12:00AM and 23 Corresponds to 11:00PM. Minutes May Be set from 0-59

**Hour - STOP TIME - Min:** Specifies the STOP TIME in Hours and Minutes during which the manager will Stop monitoring for New Data Beyond the next interval. Hours may be set for 0-23. 00 Hours Corresponds to Midnight 12:00AM and 23 Corresponds to 11:00PM. Minutes May Be set from 0-59

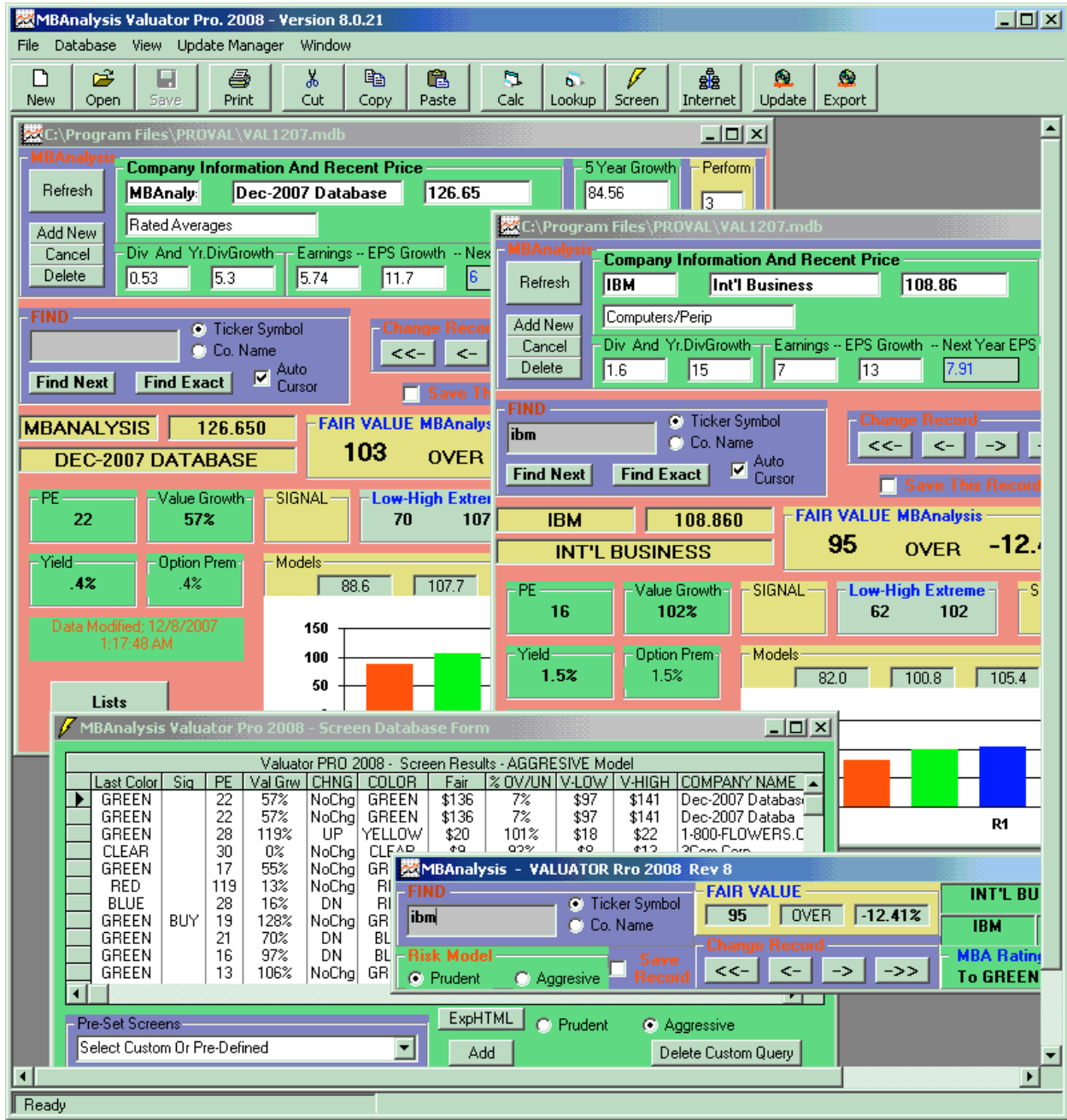
**Hour - INTERVAL - Min:** Specifies the INTERVAL in Hours and Minutes at which the manager will Repeat The Check for New Data. Hours may be set for 0-23. Minutes May Be set from 0-59. **Remember To allow enough time for the Update To Finish Before Attempting The Next Check.**

**Set:** Will Cause the TIME In the Automatic Interval Schedule To Be Set. The Monitoring will begin when you press the START button within the Interval set. Once Started the Button will Change to STOP. This will allow you to terminate the Update Interval Monitor, and reset the times or Reset The Source and Target Files for update.

**Start:** Scheduled Monitoring will begin when you press the START button. A Check for Available data will begin within the Interval set. Once Started the Button will Change to STOP. DATA INPUT and Target Database Box Will Dim. You Must STOP the Monitor to Reset The Source and Target for the Update.

**Stop:** This will allow you to terminate the Update Monitor, and reset the Day, Start, Stop and Interval Time, or Reset The Source and Target Files for update.

## Opening Multiple Valuator Pro Windows



You may open As many Valuator Pro Windows as your system resources will allow. However, your windows operating system may prevent you from opening more than ten simultaneous instances of a database connection. This limitation is due to Windows Operating System limit of 10 instances of an access database opened and in use. This includes instances of Update Manager as well as Calculator, Lookup and Screen. Your system may be licensed for more than 10 instances in which case your limit will be determined by your windows configuration. In most cases this will not prove to limit the usefulness of the Valuator Pro.

## **Arranging Windows In The Control Center.**

**Arranging Windows:** You May **Tile, Cascade or Arrange Icons** from the **Window** Drop Down Menu When A Screen, Calculator or LookUp Window has the current focus.

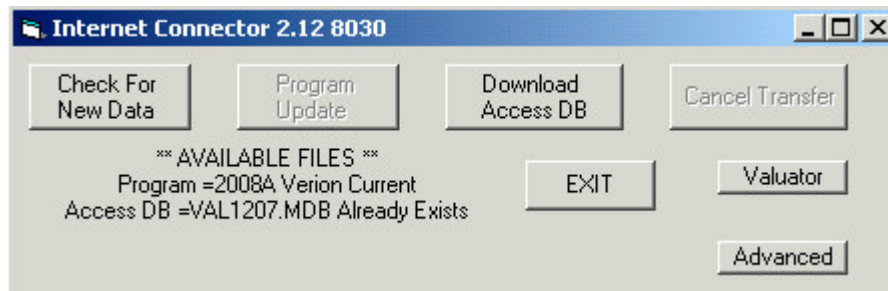
## ***Keeping Your Data Up-To-Date***

You Can Maintain Your Data By Manually Entering Changes To The Database And Saving The Records. For A Small Number Of Issues, This May Be Done By The User.

Database Updates Are Available For A Very Modest Cost From *MBAnalysis*.  
Call Customer Service At 1-800-378-0920

*MBAnalysis* Internet Subscribers May Obtain The Latest Database For Download From The Subscriber Domain.

## **INTERNET DATABASE UPDATER**



## **CHECKING FOR NEW DATA**

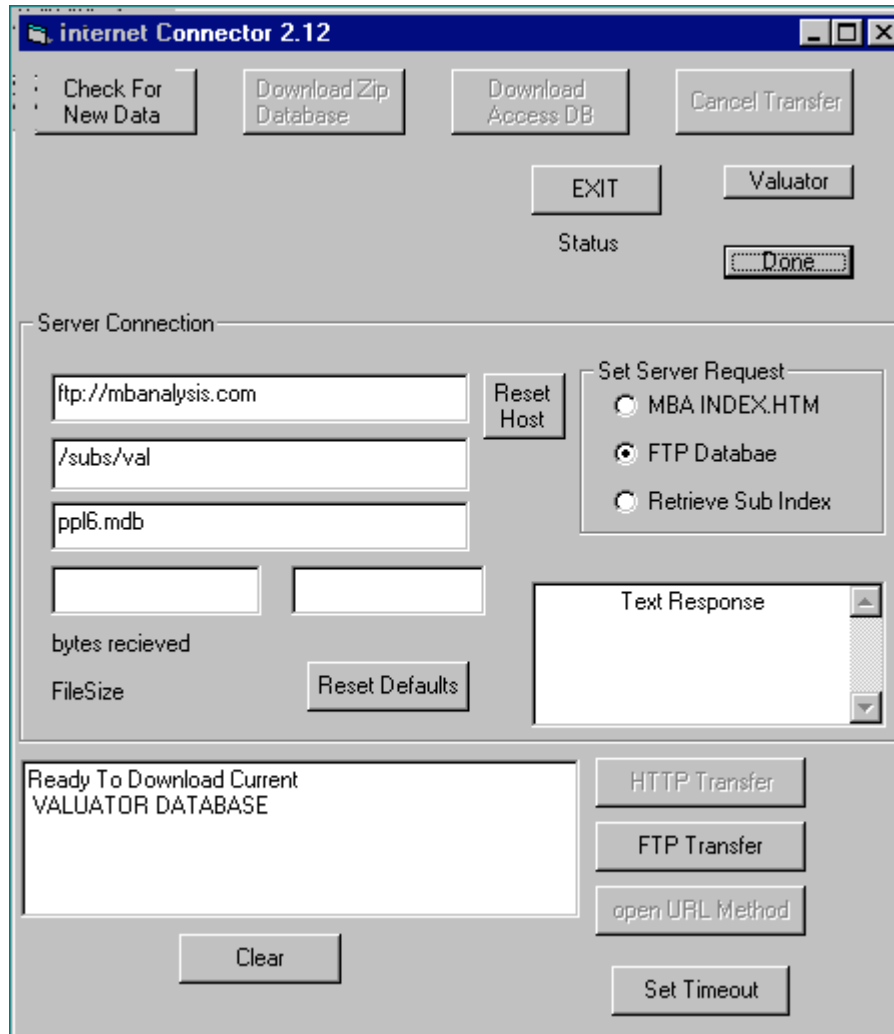
From the main Valuator Screen Select Either Icon



Click CHECK FOR NEW DATA Button If the database is current, it will indicate the file already exists.  
Download Access DB will Download the new database, or replace the current Database by the name shown.  
Any new Program Update Available will Enable The Program Update Button for Download.

## INTERNET DATABASE SETTINGS

### Advanced Settings



The Advanced Settings Panel allows the user to change the Internet Database retrieval settings. These should only be changed with guidance from software support. This panel is available to help assist in resolving any Internet Connection difficulties.

This panel may also be used to change your USER ID and PASSWORD settings.

DONE Button will return to the Internet Database Update Window.

## ***Troubleshooting Installation***

Always Install To The Default Directory \VALPRO

Do Not Run Other Programs During The Installation.

If A Message Appears Asking To Replace Existing Files, Be Cautious **Not To Overwrite Any Windows Files** That May Be Used By Other Programs. **It Is Safe To Overwrite** Anything In The \VALPRO Directory.

## ***UNINSTALLING***

### ***Troubleshooting Win Vista, 95-2000 XP & NT Installation***

**For Win 95 & NT**

Always Install To The Default Directory \Program Files\PROVAL

Do Not Run Other Programs During The Installation.

If A Message Appears Asking To Replace Existing Files, Be Cautious **Not To Overwrite Any Windows Files** That May Be Used By Other Programs. **It Is Safe To Overwrite** Anything In The \Program Files\PROVAL Directory.

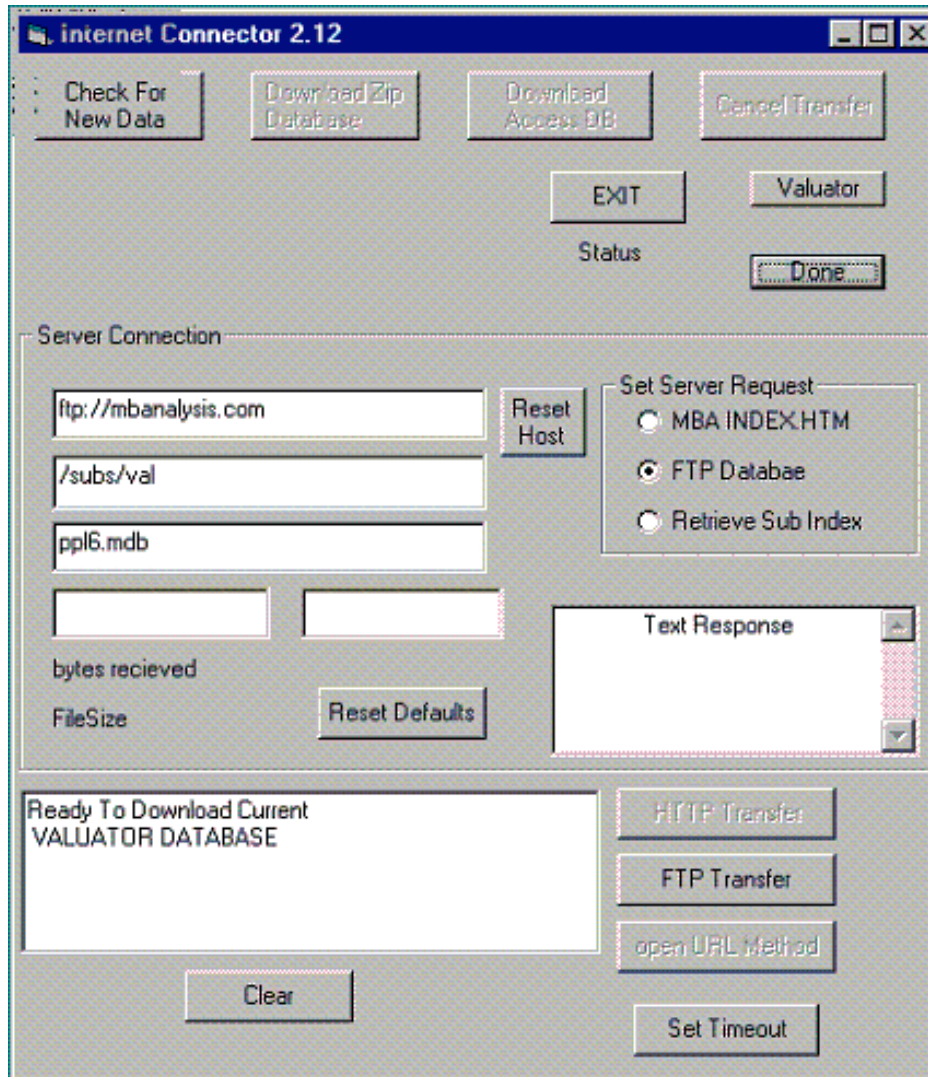
### ***UNINSTALLING Win Vista, 95-2000 XP & NT***

Go To Your Control Panel And Select ADD/REMOVE PROGRAMS. Select Valuator PRO And Then Select Remove.

### ***Troubleshooting Database Updates***

If The Message Primary And Secondary Databases Are Not Working Appears, Make Sure To Install The Data Update To The Same Directory As Your Program.

You May Rename The Database File PPLS.mdb To Another Name. Then When You Restart The Valuator PRO Program The User Database Will Become The Active Database. The User Database PPLU.mdb May Be Manipulated By The User With Other Programs Capable Of Reading Access Databases.

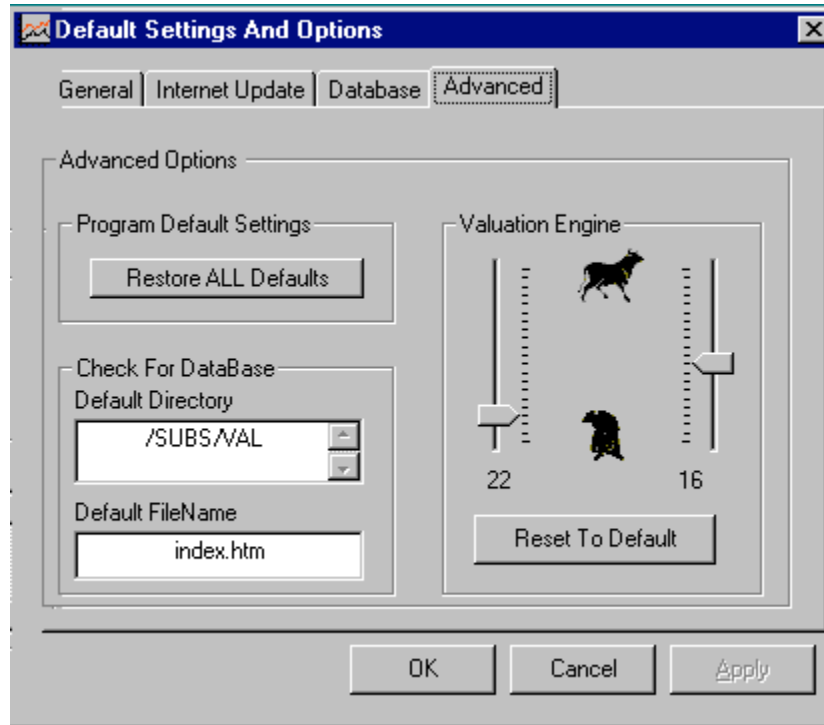


## ***Data Entry And Calculations***

Q. Values Do Not Recalculate When Entered.

A. Press ENTER KEY After You Input Your Value.

## DEFAULT SETTINGS ADVANCED OPTIONS



The Advanced Tab on the Default settings panel will allow the reset of all program default values. Press RESTORE ALL DEFAULTS Button the restart Valuator program.

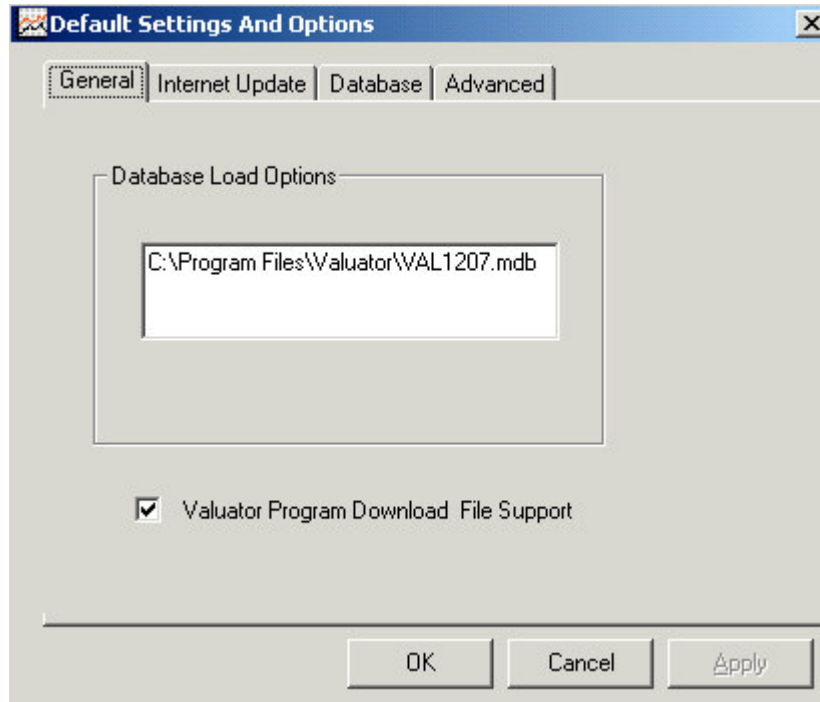
### VALUATION ENGINE

The discount values for all present value calculations may be altered. Prudent Model discount rate is set by variance of the Left Slider. Aggressive Model values are set by variance of the Right Slider control.

Reset To Default will restore the default values originally supplied.



## DEFAULT SETTINGS DATABASE OPTIONS

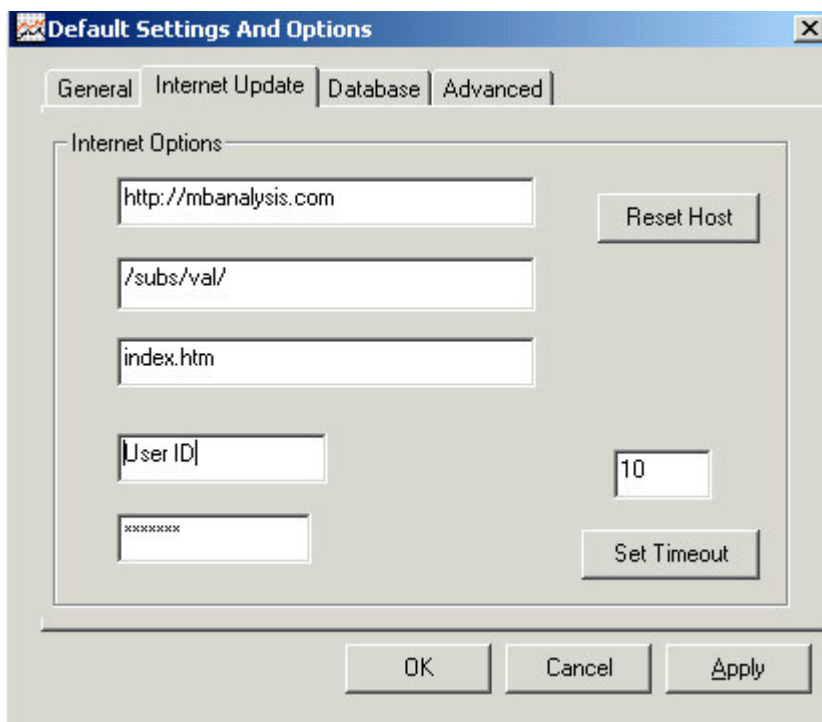


The Database Tab shows the location and name of the Current Default Database Filename.

Program Update Checking may be ENABLED By Checking Valuator Program Download File Support Check Box.

Program Update Checking may be DISABLED By Un Checking Valuator Program Download File Support Check Box.

## DEFAULT SETTINGS INTERNET UPDATE OPTIONS

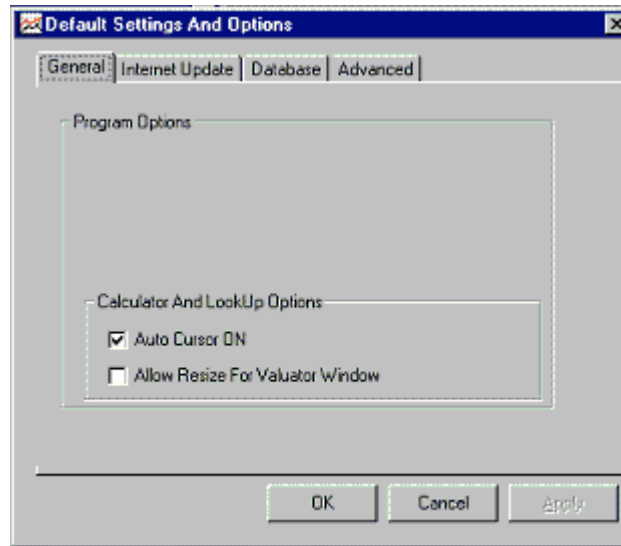


The Internet Update Tab Reflects the values set with the Advanced Settings Panel of the Internet Connector Database Updater.

Do Not Change These Settings unless Instructed by Software Support. Changes may affect your ability to Check for and Update your database from the web site.

USER ID and PASSWORD may be reset here.

## DEFAULT SETTINGS GENERAL OPTIONS



The General Tab Allows the user to Enable or Disable The Auto Cursor function set at Program Startup.

Allow Resize For Valuator Window allows the main valuator window to be enlarged or reduced.

### ***Troubleshooting Program Bugs***

Occasionally Program Bugs Surface That Were Not Caught In The Beta Test Versions. Send Us An Email Describing The Problem To: [Valuator@mbanalysis.com](mailto:Valuator@mbanalysis.com) And An *MBAnalysis* Software Programmer Will Respond As Soon As Possible.

## Appendix

### Input File Field Designations

#### RECOGNIZABLE DATA Input FIELD DESIGNATIONS

The Following Fields Are The *VALUATOR PRO COMPATIBLE Field Designations* Contained In The Valuator Pro Database Input Table which must be named COMPWKS. These Are Used For Input File *Profile File Descriptors* For Update Input. In Addition To The Specific **FieldName** In Bold Typeface, They May Also Be Represented By The **Alias** Designations As Noted Below Each **FieldName**.

#### ACCESS INPUT Database Fields Should Be Designated By The FieldName ONLY.

Manually Created TARGET Input Table Database Fields Must Be Designated By FieldName ONLY. The Input table COMPWKS must contain all fields except "SKIP" which is only used in Profile Files.

ASCII Text INPUT files used to update the Target may use Either the Correct FieldName or the listed Alias Name. All Other INPUT Fields should Be Designated as "SKIP" Fields For Use In The PROFILE FILE.

**FieldName = "TICKER\_SYMBOL"**

"TICKER\_SYMBOL", "TICKER", "SYMBOL"

**FieldName = "COMPANY\_NAME"**

"COMPANY\_NAME", "COMPANY", "NAME", "NAME\_"

**FieldName = "CURRENT\_DIVIDEND"**

"CURRENT\_DIVIDEND", "DIV", "DIVIDEND", "YR\_DIVIDEND"

**FieldName = "PRJ\_35\_YR\_APRECIATION"**

"PRJ\_3-5\_YR\_APRECIATION", "PRJ\_35\_YR\_APRECIATION", "PRJ35", "5YR",  
"GROWTH"

**FieldName = "PROJ\_DIVIDEND\_GROWTH"**

"PROJ\_DIVIDEND\_GROWTH", "PROJDIV", "DIVGROWTH", "DIVGROW"

**FieldName = "OPTIONS\_LISTING"**

"OPTIONS\_LISTING", "OPTIONS", "OPT"

**FieldName = "PRICE"**

"RECENT\_PRICE", "RECENT\_PRICE", "RECENT\_PRICE", "LAST", "PRICE",  
"CUR\_PRICE"

**FieldName = "TIM"**

"TIMELINESS", "TIM"

**FieldName = "TEC"**

"TECH\_RANK", "TEC"

**FieldName = "INDUST\_RANK"**

"INDUSTRY\_RANK", "INDUST\_RANK", "INDRANK", "RANK", "INDUSRYRANK"

**FieldName = "CURRENT\_EPS"**

"CURRENT\_EPS", "CUREPS", "EPS"

**FieldName = "NXT\_YR\_EPS"**

"NXT\_YR\_EPS", "NYEPS", "EPSNY", "NXTYR", "NXTEPS"

**FieldName = "PRJ\_EPS\_GROWTH"**

"PRJ\_EPS\_GROWTH", "PRJEPSGROW", "EPSGROWTH", "EPS\_GROWTH"

**FieldName = "EST\_CHG\_EPS\_FY"**

"EST\_%CHG\_EPS\_FY", "EST\_CHG\_EPS\_FY", "EST\_EPS\_CHG"

**FieldName = "INDUSTRY\_NAME"**

"INDUSTRY\_NAME", "IND", "INDUSTRY", "INDUSTRYNAME", "INDUSTRYGROUP"

**FieldName = "SHARES\_HELD"**

"SHARES\_HELD"

**FieldName = "PCT\_OF\_PORT"**

"PCT\_OF\_PORT", "PCT", "PICT", "PICTURE", "PCTFILE", "PICTUREFILE"

**FieldName = "LASTCOLOR"**

"LASTCOLOR", "LST", "LSTCOLOR", "PREV\_COLOR", "PREV",  
"LAST\_COLOR\_DESIG"

**FieldName = "SKIP"**

"SKIP"

## Sample Sequel Queries:

**Screen Filter Name:** " NONE "

Sequel Query = " SYMBOL IS NOT NULL;"

**Screen Filter Name:** "SPECULATIVE STOCKS SCREEN "

Sequel Query = " Mech\_Signal = 'Buy' ORDER BY AVG\_Pct DESC"

**Screen Filter Name:** "PRUDENT VALUE OPPORTUNITIES SCREEN "

Sequel Query = " Last\_Color\_desig IN ('YELLOW','GREEN') AND Price\_Earn <= 12 AND Value\_Growth\_Rate > 1.5 AND COLOR IN ('YELLOW','GREEN') AND AVG\_Pct > -.12 AND STD\_LOW > 5 ORDER BY AVG\_Pct DESC"

**Screen Filter Name:** "RISK ADVERSE STOCKS SCREEN "

Sequel Query = " Last\_Color\_desig IN ('YELLOW','GREEN') AND Price\_Earn <= 12 AND Value\_Growth\_Rate > 1.5 AND COLOR IN ('YELLOW','GREEN') AND AVG\_Pct > -.12 AND STD\_LOW > 5 AND Color\_change <> 'DN' AND YR\_DIVIDEND > 0.0 ORDER BY AVG\_Pct DESC"

**Screen Filter Name:** "AGRESSIVE OPPORTUNITIES STOCK SCREEN"

Sequel Query = " Mech\_Signal = 'Buy' AND Color\_change <> 'DN' AND COLOR <> 'RED' ORDER BY AVG\_Pct DESC"

**Screen Filter Name:** "DEFENSIVE VALUE STOCKS SCREEN "

Sequel Query = " Price\_Earn < 13.7 AND COLOR >= 'GREEN' AND COLOR <> 'RED' AND YIELD > .024 AND AVG\_Pct >= -.122 ORDER BY AVG\_Pct DESC"

**Screen Filter Name:** "SHORT SHOTS STOCK SCREEN "

Sequel Query = " Color\_change = 'DN' AND COLOR = 'RED' AND AVG\_Pct < -.13 ORDER BY AVG\_Pct"

**Screen Filter Name:** "OVERSEAS OPPORTUNITIES SCREEN "

Sequel Query = " IndustryGroup LIKE ""For\*"" ORDER BY AVG\_Pct DESC"

**Screen Filter Name:** "UPGRADES and DOWNGRADES SCREEN "

Sequel Query = " Color\_change IN ('UP','DN') ORDER BY Color\_change DESC , COLOR DESC"

**Screen Filter Name:** "INDUSTRY CUSTOM SCREEN ON: "

Sequel Query = " IndustryGroup LIKE "" & SqlValue & ""\*"""

**Screen Filter Name:** "Pension 401-K And IRA Possibilities"

Sequel Query = " Last\_Color\_desig IN ('YELLOW','GREEN') AND Price\_Earn <= 12 AND Value\_Growth\_Rate > 1.5 AND COLOR IN ('YELLOW','GREEN') AND AVG\_Pct > -.12 AND STD\_LOW > 10 ORDER BY AVG\_Pct DESC"

**Screen Filter Name:** "BUY STOCKS SCREEN "

Sequel Query = " Mech\_Signal = 'Buy' ORDER BY AVG\_Pct DESC"

**Screen Filter Name:** "SELL STOCKS SCREEN "

Sequel Query = " Mech\_Signal = 'Sell' ORDER BY AVG\_Pct"

**Screen Filter Name:** "100 MOST UNDERVALUED SCREEN "

Sequel Query = "SELECT TOP 100 \* FROM COMPNPV WHERE SYMBOL IS NOT NULL ORDER BY AVG\_Pct DESC "

**Screen Filter Name:** "100 MOST OVERVALUED SCREEN "

Sequel Query = "SELECT TOP 100 \* FROM COMPNPV WHERE SYMBOL IS NOT NULL ORDER BY AVG\_Pct ASC "

**Screen Filter Name:** "BEST OF THE BEST STOCK SCREEN "

Sequel Query = " Mech\_Signal <> 'Sell' AND Color\_change = 'UP' AND COLOR = 'YELLOW' ORDER BY AVG\_Pct DESC"

**Screen Filter Name:** "BEST NOW STOCK SCREEN "

Sequel Query = " Mech\_Signal <> 'Sell' AND COLOR = 'YELLOW' ORDER BY AVG\_Pct DESC"

**Screen Filter Name:** "100 HIGHEST PE STOCK SCREEN "

Sequel Query = "SELECT TOP 100 \* FROM COMPNPV WHERE SYMBOL IS NOT NULL ORDER BY Price\_Earn DESC"

**Screen Filter Name:** "100 LOWEST PE STOCK SCREEN "

Sequel Query = "SELECT TOP 100 \* FROM COMPNPV WHERE Price\_Earn > 0 AND Value\_Growth\_Rate > 0 ORDER BY Price\_Earn ASC"

**Screen Filter Name:** "100 HIGHEST VALUE GROWTH STOCK SCREEN"

Sequel Query = "SELECT TOP 100 \* FROM COMPNPV WHERE Price\_Earn > 0 AND Value\_Growth\_Rate > 0 ORDER BY Value\_Growth\_Rate DESC"

## Value Investing Common Sense

### Tips And Hints:

- **Remember, ALL Value Is Relative.** Manias exist from time to time, whether Tulips, Gold, Stocks or Objects d'Art. You only get a bargain, when something is out of favor.
- **Do NOT Get Greedy** Leave Something for the next guy. He has to have a reason to buy what you want to sell. That may mean buying when you don't want to, and Selling when everyone wants what you have.
- **Enormously Over Valued Or Under Valued Issue May Be That Way FOR A REASON And May Stay That Way For Long Periods Of Time.** Grossly undervalued stocks are usually that way because something is Very

wrong. Look for Moderate Under Valuation. That way, you can avoid many problems, and wait for the market to recognize the Value you see.

- **No One Ever Goes Broke Taking A Profit.** If you do not monetize your profits they may not be there later. Don't be afraid to take some chips off the table and put them in your pocket.
- **Do Not Loose A Lot Of Money.** If Something you bought goes against you, get out as soon as you see your mistake. Set a percentage of loss, or dollar amount that you are comfortable to walk away from, and get out if things get that bad. There is always another opportunity. Many short term trades have become long term investments. If something goes down Half, It Must DOUBLE To Come Back. Do not try to make up losses dollar for dollar. The markets do not know what you lost and will not sympathize.
- **Markets Pay For Taking Risk.** The less risk, the less reward. Know how much risk you are willing to take, and set the amount of profit you seek. All stocks carry risk. For example, Bonds with maturities longer than five years and Utility stocks can crash when interest rates rise
- **Do What Makes Things Better, Don't Do What Makes Things Worse.** It is better to buy something that is going UP, and Sell something that is going Down. Adding more when something is good, makes it better. More of something bad, usually makes things worse.
- **Always Keep Some Dry Powder.** Dollar Cost Averaging can give you the discipline to buy more shares when something is cheap, and fewer shares when something is expensive. Don't rush to put your money to work. Invest gradually. Always keep some cash on hand for unexpected opportunities or needs.
- **Buy What You Know.** Where you work, or what your study or use, might give you an edge. Remember, there are a lot of smart people out there, but you might see things in your career or at the mall, that others will discover later. Invest in what you know, you will have a better chance to get in and out at the right time.
- **Don't Trade The Headlines.** The market is a discounting mechanism, it is always looking to the future. By the time you read about something in the paper it may be too late to get the benefits.
- **Buy For A Reason And Know Your Exit Strategy.** Before you Buy, decide what would make you sell the stock. Buy when you have a reason. Remember why you bought, and sell it if things change. Don't find a reason to keep a stock for tomorrow, that you wouldn't buy today. Do not worry about leaving money on the table. If your goal is met, that is all you should expect.
- **Buy Just 12-20 Stocks.** You must be able to follow the stocks you invest in, the more stocks you own, the harder it is to monitor what happens to each of them. Diversification can limit losses, but it can also limit gains.
- **Look For Large Capitalization Stocks With Large And Growing Cash Flows.** Most of the time, bigger IS better. Larger companies have more analysts following them and greater visibility, and are less likely to have trouble someone does not see.
- **Be wary of One Product Companies.** Things can change, do not put all your eggs in one basket.
- **Do Not Chase Stocks Or Fads.** Everyone loves a winner, but when something is in great demand, it usually commands a premium. When the hype goes away, so will the premium.
- **Control Your Emotions.** Quick reflexes can be good. But acting without thinking, can lead you down the wrong path. Know when to break the rules, but know the rules.
- **Quality Common Stocks Have Always Provided The Best Long Term Gains.** If a companies earnings' prospects remain constant or improve a much lower price for the stock diminishes risk geometrically.
- **Leave Trading And Foreign Stocks For Professional Investors, unless you have specific Knowledge Of A Particular Issue.**
- **Don't Buy Or Sell Solely For Tax Considerations.** Death And Taxes Are Certainties. If you make money, you have to pay tax. Spend your time thinking about making money. Pay what taxes you must, but make as much money as you can.
- **Diversify At Bottoms, Consolidate At Tops.** Buy more when things are cheap, buy less when things are expensive. Spread out when markets are sold out, limit yourself to the best when markets are expensive.
- **Nothing Is Perfect. There Is No Magic Bullet.** Patient hard work and intelligent application of discipline, will over time, always yield better results than spontaneous impulses.

## Index

<b>—1—</b>			
100 HIGHEST PE STOCK SCREEN .....	46	<b>Clear</b> .....	
100 HIGHEST VALUE GROWTH STOCK SCREEN.....	46	<b>Clone Database</b> .....	
100 LOWEST PE STOCK SCREEN .....	46	9	
100 MOST OVERVALUED SCREEN .....	46	<b>Color Designation</b> .....	
100 MOST UNDERVALUED SCREEN .....	46	16	
<b>—5—</b>		Company .....	
5 Year Expected Growth Rate .....	14	12	
<b>—A—</b>		<b>COMPANY_NAME</b> .....	
aberrantly over or under valued .....	16	44	
<b>ACCESS INPUT</b> .....	29, 44	Control Center Progress Bar .....	
Accessing User Records .....	13	10	
Active Database .....	38	Control Center Status Bar .....	
Add a New Record.....	12	10	
Add new.....	14	<b>Create New Database</b> .....	
<b>Add New Symbols Not On File</b> .....	30	9	
ADD/REMOVE PROGRAMS .....	38	<b>CSV(Comma Separated Variable</b> .....	
Adding Records .....	13	28	
advance .....	12	<b>CURRENT FILES IN PROCESS</b> .....	
Advancing to the next record.....	15	31	
AGGRESSIVE OPPORTUNITIES STOCK SCREEN.....	45	<b>CURRENT_DIVIDEND</b> .....	
Agresssive models .....	16	44	
<b>Arranging Windows</b> .....	35	<b>CURRENT_EPS</b> .....	
<b>ASCII File Input</b> .....	29	44	
<b>ASCII Text Files</b> .....	28	<b>Custom Or Pre-Defined Screen</b> .....	
<b>ASCII Text INPUT</b> .....	44	19	
<b>Auto Activate</b> .....	13	<b>—D—</b>	
<b>Auto Cursor</b> .....	13	Data Entry .....	
Auto Display.....	25	12	
<b>—B—</b>		<b>Data Input Source</b> .....	
Back One Record.....	15	28	
Back Record .....	12	<b>DATA PROFILE FILE</b> .....	
Basic Control Center Operations .....	9	28	
Beginning of File.....	15	Data Stream.....	
BEST NOW STOCK SCREEN .....	46	31	
BEST OF THE BEST STOCK SCREEN .....	46	Database .....	
<b>Blue</b> .....	16	12	
Building A Custom Query Screen Filter.....	21	DATABASE.....	
Building Custom Selection Criteria .....	19	14	
BUY.....	16	Database Fields .....	
BUY STOCKS SCREEN .....	46	14	
<b>—C—</b>		DATASOURCE .....	
<b>Calculator (New):</b> .....	9	29	
<b>Calculator And LookUp Windows</b> .....	11	<b>Day</b> .....	
Cancel .....	14	33	
Cancel button.....	12	Default Directory.....	
CHECK FOR NEW DATA Button .....	8, 36	38	
CHECKING FOR NEW DATA .....	36	DEFAULT SETTINGS ADVANCED OPTIONS .....	
		40	
		DEFAULT SETTINGS DATABASE OPTIONS.....	
		41	
		DEFAULT SETTINGS GENERAL OPTIONS .....	
		43	
		DEFAULT SETTINGS INTERNET UPDATE OPTIONS .....	
		42	
		DEFENSIVE VALUE STOCKS SCREEN .....	
		45	
		Deletes the Current Record .....	
		15	
		Display Portfolio .....	
		26	
		Display PORTFOLIO.....	
		27	
		Dividend.....	
		14	
		<b>Do Not Populate</b> .....	
		31	
		duplicate records .....	
		12	
<b>—E—</b>			
		Earnings Per Share .....	
		14	
		Email .....	
		43	
		End Of Day Updates .....	
		32	
		End of File.....	
		15	
		End Of The File.....	
		13	
		ENTER KEY .....	
		12	
		<b>EST_CHG_EPS_FY</b> .....	
		45	
		<b>Exact</b> .....	
		15	
		EXIT .....	
		27	
		Expected Dividend Growth Rate.....	
		14	
		<b>Export - Print</b> .....	
		10	
		Exporting And Printing .....	
		22	
		Extreme ranging in HIGH - LOW .....	
		15	
<b>—F—</b>			
		<b>FAIR</b> .....	
		15	



**FIELD DESCRIPTORS** .....28  
**FIND** .....15  
 FONTS Button.....27  
 Forward and Back Record .....12  
 Forward One Record.....15  
 Forward Record .....12

—G—

**Green**.....16  
 Growth in Earnings.....14

—H—

**HIGH - LOW - FAIR** .....15  
Hour - INTERVAL - Min .....33  
Hour - START TIME - Min .....33  
Hour - STOP TIME - Min .....33

—I—

**INDUST\_RANK** .....44  
 INDUSTRY CUSTOM SCREEN .....46  
 Industry Group.....14  
**INDUSTRY\_NAME** .....45  
 INPUT DATA FILE .....28  
 Install The Data Update .....38  
 INSTALLING DATABASE UPDATE .....8  
 INSTALLING THE SOFTWARE.....8  
 Internet Database Download Updates.....8  
 INTERNET DATABASE SETTINGS .....37  
 INTERNET DATABASE UPDATER.....36  
 INTERVAL .....33  
 Intraday Updates.....32  
 Introduction .....7

—K—

*Keeping Your Data Up-To-Date*.....36

—L—

**LASTCOLOR** .....45  
License Agreement .....51  
 long or short positions .....17  
Lookup: .....9

—M—

Model Values.....16  
 modify.....12  
 modify the database .....14

—N—

new record .....15  
Next .....15  
 NONE .....45  
 NOT RATED.....16  
 NXT\_YR\_EPS.....44

—O—

Open Database .....10

Open The Database For Screening ..... 18  
 Options .....14  
 Options Premium .....17  
**OPTIONS\_LISTING** .....44  
 original database.....12  
 original values .....12  
 Over or Under fair value .....16  
 OVERSEAS OPPORTUNITIES SCREEN.....45

—P—

**PCT\_OF\_PORT** ..... 45  
 PE.....17  
 Pension 401-K And IRA Possibilities .....46  
**Percentage Over / Under**.....16  
 periodic Updates .....32  
Populate After Update .....31  
POPULATE The Database .....18  
Populate While Updating .....31  
 Populating a Database During Update .....31  
 PORTFOLIO AND LIST REPORTER .....24  
 Portfolio List Load And Auto Display .....25  
 PORTFOLIO REPORT DISPLAY .....26  
**Possible Data Feild Descriptors** .....28  
 PPLS.mdb .....38  
 PPLU.mdb.....38  
 Pre-Set Screens .....19  
 previous .....12  
Previous .....32  
**PRICE** .....44  
 Price Earnings Ratio.....17  
 Primary And Secondary Databases Are Not Working.....38  
 PRINT Button .....27  
 PRINT Portfolio.....27  
**PRJ\_35\_YR\_APRECIATION** .....44  
**PRJ\_EPS\_GROWTH** .....45  
**Profile Files** .....29  
*Program Bugs* .....43  
**PROJ\_DIVIDEND\_GROWTH**.....44  
 Prudent and Aggressive.....12  
 Prudent models.....16  
 PRUDENT VALUE OPPORTUNITIES SCREEN .....45  
 Puts and Calls.....17

—R—

recalculate .....12  
 recalculate values .....16  
 Recalculate When Entered .....39  
RECOGNIZABLE DATA Input FIELD DESGNATIONS .....44  
**RED** .....16  
 Rename The Database .....38  
 Replace Exiting Files .....38  
 RISK ADVERSE STOCKS SCREEN .....45  
 Risk Model.....16

—S—

Save THIS Record.....12  
 Saving Your Changes.....12  
Scheduling Interval Updates .....33  
Screen .....10  
Selecting The ASCII data Input File .....30

SELL.....16  
 SELL STOCKS SCREEN .....46  
Set.....33  
**SHARES\_HELD** .....45  
 SHORT SHOTS STOCK SCREEN.....45  
**Signals**.....16  
Single Ticker Reports.....23  
 SKIP .....44, 45  
 Sorting The Output Results .....20  
 SPECULATIVE STOCKS SCREEN .....45  
 Standard Deviation .....17  
Start.....33  
 START UPDATE .....31  
 STARTING TIME.....33  
Status Bar.....10  
Stop.....33  
 STOP .....33  
 STOP TIME.....33

—T—

**Table Of Contents**.....4  
**TARGET** .....30  
Target Database For Update .....30  
**TEC**.....44  
 The Valuator -Pro Control Center .....9  
 the *Valuator Update Status Window* .....30  
**TICKER\_SYMBOL** .....44  
**TIM**.....44  
*Troubleshooting Database Updates* .....38  
*Troubleshooting Installation* .....38

—U—

*UNINSTALLING* ..... 38  
*UNINSTALLING Win95 & NT*..... 38  
**UPDATE MANAGER** .....28  
Update Options.....30  
 update time.....31  
 Updates at a specific time.....32  
 Updating Process.....31  
 Upgrades and downgrades.....16  
 UPGRADES and DOWNGRADES SCREEN.....46  
 User Database.....38

—V—

Valuation Model ..... 14  
**VALUATOR PRO COMPATABLE**.....44  
Valuator TARGET Database .....28  
 Valuator@mbanalysis.com.....43  
**Value Growth**.....15  
 Value Investing Common Sense .....46  
View Data Input .....10  
View Full .....10  
View Small.....10

—W—

**Windows NT and 95** ..... 8

—Y—

**Yellow**.....16  
 Yield.....17

**Important Notice - Please Read License Agreement Carefully**

*MB Analysis* Copyright © 1997-2008, by *MBAnalysis*. All Rights Reserved

BY USING THIS INFORMATION, YOU INDICATE YOUR ACCEPTANCE OF THE FOLLOWING:

NEITHER *MB Analysis, MBA Financial Publishing, Inc.*, NOR ANYONE ELSE INVOLVED IN CREATING, PRODUCING, OR DISTRIBUTING THIS PRODUCT WARRANTS THAT IT WILL SATISFY YOUR REQUIREMENTS FOR INVESTING OR THAT THE PRODUCT WILL BE ERROR-FREE. THIS PRODUCT IS DISTRIBUTED "AS IS" WITHOUT WARRANTIES OF ANY KIND, EITHER EXPRESSED OR IMPLIED, INCLUDING BUT NOT LIMITED TO WARRANTIES OF MERCHANTABILITY OR FITNESS FOR A PARTICULAR PURPOSE OR USE. NEITHER *MB Analysis, MBA Financial Publishing, Inc.*, NOR ANYONE ELSE INVOLVED IN CREATING, PRODUCING OR DISTRIBUTING THIS PRODUCT SHALL BE LIABLE FOR ANY DIRECT, INDIRECT, INCIDENTAL, SPECIAL, CONSEQUENTIAL OR PUNITIVE DAMAGES, LOST PROFITS, LOST OPPORTUNITIES OR LOST SAVINGS ARISING FROM THE USE OF THIS PRODUCT.

NO PART OF THIS *MBAnalysis VALUATOR SOFTWARE* MAY BE COPIED OR DISTRIBUTED, TRANSMITTED OR TRANSCRIBED, STORED IN A RETRIEVAL SYSTEM OR TRANSLATED INTO ANY LANGUAGE, IN ANY FORM OR BY ANY MEANS, ELECTRONIC , MECHANICAL, MAGNETIC, MANUAL OR OTHERWISE DISCLOSED TO THIRD PARTIES WITHOUT THE EXPRESSED WRITTEN PERMISSION OF *MBA Financial Publishing, Inc.*

*MBA Financial Publishing, Inc.* AND OR PERSONS OR ENTITIES CONNECTED OR RELATED TO IT MAY BUY OR SELL OR MAY HAVE BOUGHT OR SOLD ANY ISSUE OR ITS DERIVATIVE MENTIONED IN ITS REPORTS.

NO PERSON OR ENTITY CONNECTED TO *MBA Financial Publishing, Inc.* OR THEIR FAMILIES RECEIVE OR WILL RECEIVE CONSIDERATION FOR PLACING OR OMITTING DATA IN THIS REPORT.

*MBA Financial Publishing, Inc.* RESERVES THE RIGHT TO REVISE THIS VALUATOR SOFTWARE AND TO MAKE CHANGES FROM TIME TO TIME IN THE CONTENT HEREOF WITHOUT OBLIGATION OF *MB Analysis* TO NOTIFY ANY PERSON OR ORGANIZATION OF SUCH CHANGES. FACTUAL MATERIAL IS NOT GUARANTEED BUT IS OBTAINED FROM SOURCES THAT ARE CONVENTIONAL AND BELIEVED TO BE RELIABLE.

THE RAW DATA USED IN PRODUCING THESE REPORTS ORIGINATES FROM CONVENTIONAL SOURCES AND FROM INTERVIEWS BELIEVED RELIABLE AND TRUTHFUL. ERRORS IN CALCULATION, OF FACT AND OF ANALYSIS MAY REMAIN. SOURCES OF INFORMATION ARE BELIEVED TO BE RELIABLE, BUT THEY ARE IN NO WAY GUARANTEED TO BE COMPLETE OR WITHOUT ERROR. OPINIONS ARE SUBJECT TO CHANGE WITHOUT NOTICE. ALL OPINIONS, RECOMMENDATIONS OR SUGGESTIONS ARE GIVEN WITH THE EXPRESSED UNDERSTANDING THAT USERS ACTING ON INFORMATION SHALL ASSUME ALL RISKS INVOLVED.

**Stock Investors - Select Value Stocks!**  
**Fundamental Valuation For Your Stock Portfolio-**  
**Are You Paying A Premium? Or Buying Your Stocks At A Discount?**  
**Know Fair Value - Before You Act!**



Simple Yet Sophisticated Analysis For Over  
1800 Stocks Traded On The NYSE, AMEX  
And NASDAQ.

Avoiding A Single Mistake Could Save You  
Many Times The Cost Of The *Valuator PRO*.

Select Value Stocks That Meet Your  
Criteria. Screen, Print, Or Export Your  
Results. Even Publish To Your Web Site.

<b>Valuator PRO Ver 2008 Includes</b>
<i>Windows Vista Windows95-98,2000 and NT</i>
<i>1800 Stock Database - With coupon for FREE Update to the Latest Database. Internet Database and Program Update Downloads</i>
<i>Prudent And Aggressive Modeling to Satisfy the needs of different Investor Goals and Risk Tolerance. THE ULTIMATE VALUE STOCK SELECTION TOOL!</i>

**MBAAnalysis -**

USA And International  
386-447-8148

**<http://mbanalysis.com>**

Internet Resources and On-line Tools To Help  
Refine Investment Decisions.  
Part No. 20080164

You must accept the enclosed License Agreement  
Before you can use this product. If you Do Not  
accept the terms of the License Agreement, you  
should promptly return this product for a refund.

**System Requirements:**

For any 486, And All Pentium systems

- \* Personal Computer with a 486/33 MHz or Higher processor.
- \* 8 MB of memory; 16 recommended.
- \* 4 MB of available hard-disk space.
- \* CD-ROM Or 3 1/2" Floppy Disk Drive.
- \* VGA or higher-resolution display adapter.
- \* Mouse or compatible pointing device.

© 1998-2008 MBAAnalysis. All Rights Reserved.

All Other trademarks and brand names are the property  
of their respective owners.

**30 days free technical support.**

**Media:**

*Valuator PRO Ver. 2008* is distributed on CD-ROM  
Version for the x86 platform is available directly from  
MBA Financial Publishing Inc.

*List Price \$ 549.95 US*